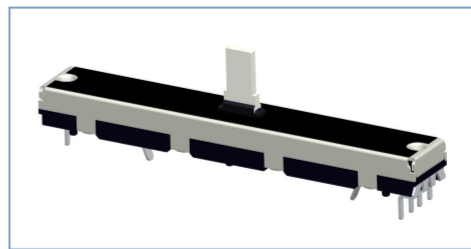
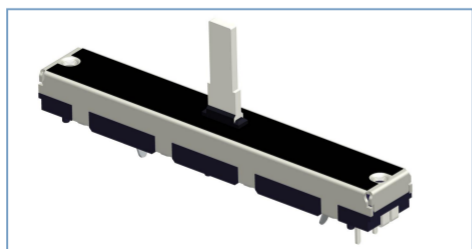


SLIDING TYPE POTENTIOMETER

45mm Trip SK458 Series 45mm 行程SK458系列



SK458

NHA

01

15C

B10K

1

Model Series
產品系列

3

Design Code
設計代號

5

Curve And Resistance
曲线及阻值

2

Product Form
產品形態

4

Shaft Type and Shaft Length
軸型及軸長

应用于：调音台、电子琴、吉他及其它相关电子设备上
Application: mixer, electronic organ, guitar and other related electronic equipment

主要功能：调节音量、调节音调、调节平衡
Main functions: Adjust volume, tone and balance

Ordering Information 订货说明		Code 代码	Specification 規格參數
1	Model Series 产品系列	SK458	See SK458 Series Dimensions 見 SK458 系列
2	Product Form 产品形态	NHA	
3	Design Code 设计代号	01	
4	Handle Type and Handle Length 柄型及柄长	15C	See SK458 axis dimension table 見 SK458 軸型尺寸表
5	Resistance Taprt and Valee 曲线及阻值	曲线 Curve	See the potentiometer graph on the last page 見最後一頁電位器曲線圖
		阻值 Resistance	"10K"为阻值书写形式，表示阻值为10000Ω，

SLIDING TYPE POTENTIOMETER

45mm Trip SK458 Series 45mm 行程SK458系列

MECHANICAL SPECIFICATION 机械性能

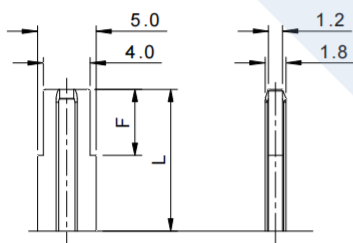
Total Sliding Travel 滑動行程	45±0.5 mm
Operating Force 滑動力	10gf.cm~100gf.cm
Click Number 定位數	□1C □11C
Click force 定位推動力	50~200gf.cm
Shaft Stop Strength 止檔強度	≤5kgf.cm
Shaft Wobble (mm p-p) 軸擺動	Within (0.7XL/20)mm p-p Max. L=Shaft Length

ELECTRICAL SPECIFICATION 電氣性能

Total Resistance Range 總阻值及誤差	500Ω<R<1MΩ:±20% : 1KΩ≥R≥1MΩ:±30%
Resistance Taper 電阻特性曲線	See Potentiometer linear figure
Power Rating 負載功率	Linear taper 0.25W.
Max. Operating Voltage 最大工作電壓	150V AC
Residual Resistance 殘留電阻	Between terminal 1~2: 20Ω Max, 2~3: 20Ω Max
Sliding Noise 滑動雜音	Less than 100 mV
Insulation Resistance 絕緣電阻	100 MΩ min at 250 VDC.
Withstanding Voltage 耐電壓	1 minute at AC 250V
Sliding life 滑動壽命	15,000 cycles

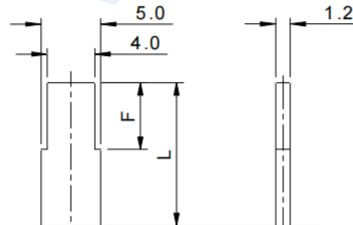
Handle Type and Handle Length 柄型及柄長 (SK08 Series)

H 型 (材質為塑膠)



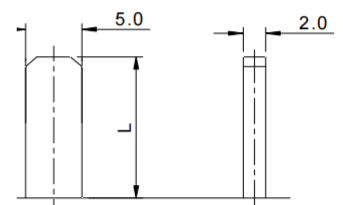
L	10	15	20
F	7	10	10

C 型 (材質為鐵材表面鍍鎳)



L	10	15	20
F	7	10	10

B 型 (材質為塑膠)



L	10	15	20
---	----	----	----

SLIDING TYPE POTENTIOMETER

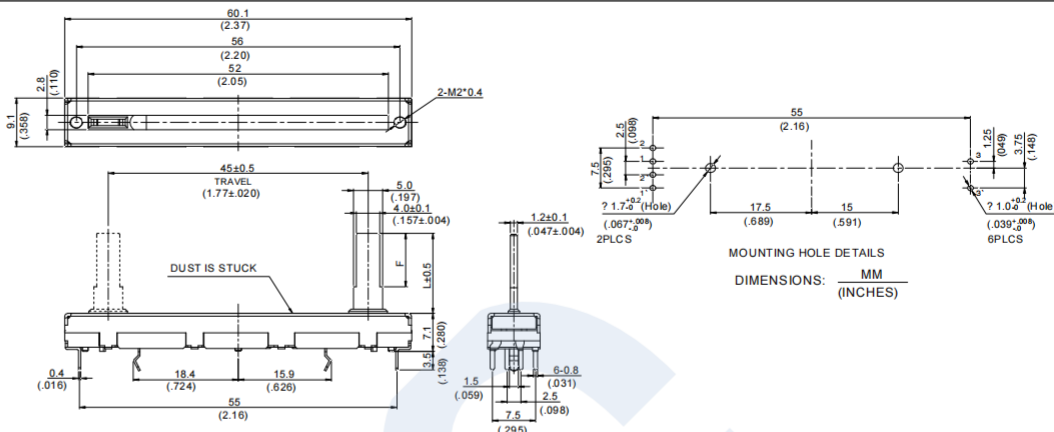
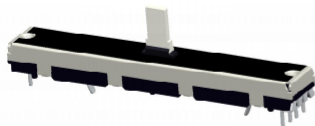
45mm Trip SK458 Series 45mm 行程SK458系列

SK458 Series Dimensions

MODEL

DIMENNSIONS

SK458GHA01



SK458NHA02

