

RK094 15 - D5 - FD15.5A5 - B10K

1 Model Series
產品系列

3 Bushing Type
軸套類型

5 Curve And Resistance
曲線及阻值

2 Design Code
設計代號

4 Shaft Type and Shaft Length
軸型及軸長

应用于：调音台、多媒体音响、功放及家用电器

Application: mixer, multi - coal acoustics, power amplifier and household appliances

主要功能：调节音量、调平衡、调压、调温、调光

Main functions: adjust volume, balance, pressure, temperature and light

Ordering Information 订货说明		Code 代码	Specification 規格參數
1	Model Series 产品系列	RK094	See RK094 Series Dimensions 見 RK094 系列產品圖
2	Design Code 设计代号	15	
3	Bushing Type 轴套类型	D5	Φ5 Bushing Length 5mm Φ5 軸套長度 5mm
4	Shaft Type and Shaft Length 轴型及轴长	FD15A5	See RK094 Series Dimensions 見 RK094 系列產品圖
5	Resistance Taprt and Valee 曲线及阻值	曲线 Curve	See the potentiometer graph on the last page 見最後一頁電位器曲線圖
		阻值 Resistance	"10K"为阻值书写形式，表示阻值为10000Ω,

MECHANICAL SPECIFICATION 機械性能

Total Rotational Angle 旋轉角度	<input type="checkbox"/> 250°±10° <input type="checkbox"/> 220°±10° <input type="checkbox"/> 360°
Rotational Torque 旋轉力矩	5gf.cm~80gf.cm
Shaft Stop Strength 止檔強度	≥1.5kgf.cm
Shaft Wobble (mm p-p) 軸擺動	Within (0.7XL/20)mm p-p Max. L=Shaft Length

ELECTRICAL SPECIFICATION 電氣性能

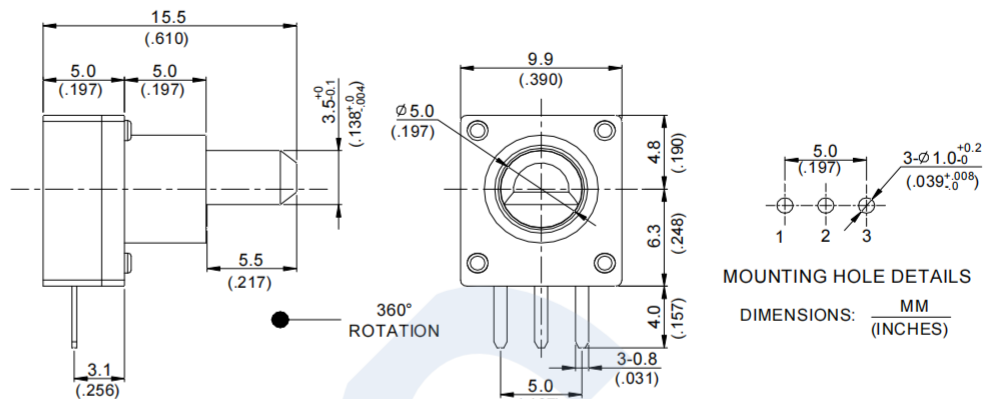
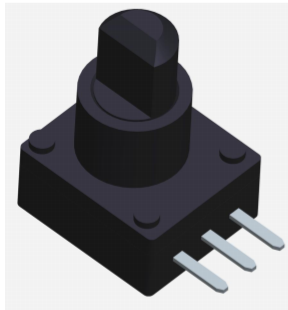
Total Resistance Range 總阻值及誤差	500Ω<R<1MΩ:±20% : 1KΩ≥R≥1MΩ:±30%
Resistance Taper 電阻特性曲線	See Potentiometer linear figure
Power Rating 負載功率	B taper 0.01W Other taper 0.05W
Max. Operating Voltage 最大工作電壓	50V AC/5V DC
Residual Resistance 殘留電阻	Between terminal 1~2: 500Ω Max, 2~3: 500Ω Max
Rotational Noise 旋轉雜音	Less than 100 mV, at DC 20 V
Insulation Resistance 絕緣電阻	100 MΩ min at 250 VDC.
Withstanding Voltage 耐電壓	1 minute at AC 250V
Rotational life 回轉壽命	300,000 cycles

RK094 Series Dimensions

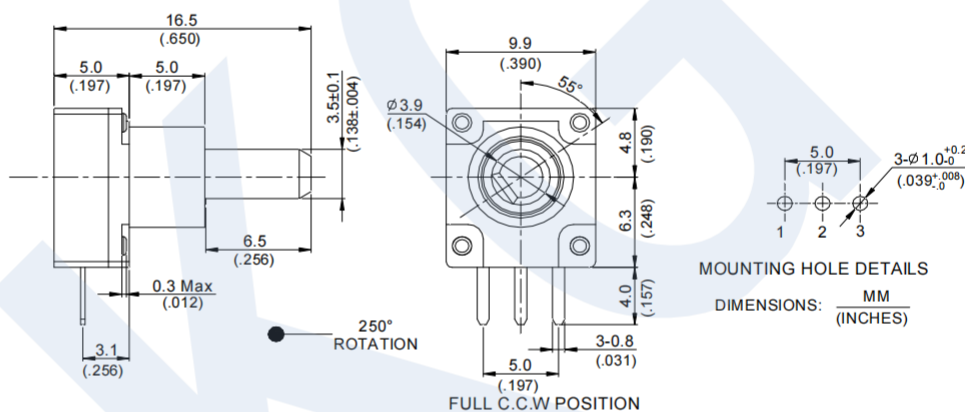
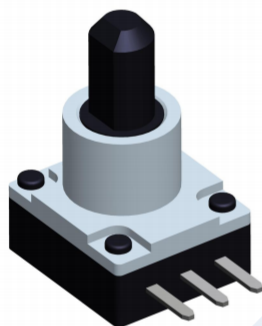
MODEL

DIMENNSIONS

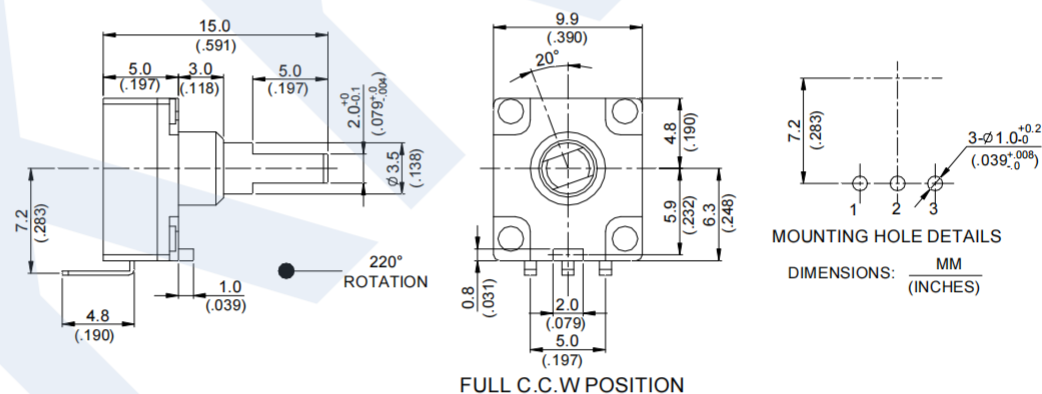
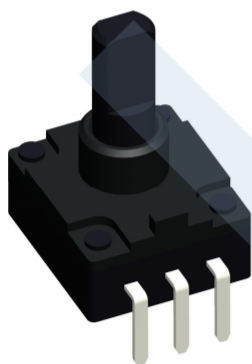
RK09415-FD15.5



RK09415-FD16.5



RK09412-FF15



RK09423-F9

