

RK093 NV - 01 - A2 - F15A7 - B10K

1 Model Series
產品系列

2 Product Form
產品形態

3 Design Code
設計代號

4 Bushing Type
軸套類型

5 Shaft Type and Shaft Length
軸型及軸長

6 Curve And Resistance
曲線及阻值

应用于：此旋转可调电位器适用调音台、多媒体音响、功放及家用电器

Application: this rotary adjustable potentiometer is suitable for mixer, multi-coal sound, power amplifier and household appliances.

主要功能：调节音量、调平衡、调压、调温、调光

Main functions: adjust volume, balance, pressure, temperature and light

Ordering Information 订货说明		Code 代码	Specification 规格参数
1	Model Series 产品系列	RK093	See RK093 Series Dimensions 見 RK093 系列產品圖
2	Product Form 产品形态	NH	
3	Design Code 设计代号	01	
4	Bushing Type 轴套类型	A2	Φ6.8 Smoke tube, Length 2mm/5mm Φ6.8 抽管, 長度可選 2mm/5mm
		A5	
		D5	Φ9.0 Plastic sleeve Length 5mm Φ9.0 塑胶轴套長度 5mm
		M9B5	M9 Threaded Bushing Length 5mm M9 螺纹轴套長度 5mm
5	Shaft Type and Shaft Length 轴型及轴长	FD15A7	See RK093 axis dimension table 見 RK093 軸型尺寸表
6	Resistance Taprt and Valee 曲线及阻值	曲线 Curve	See the potentiometer graph on the last page 見最後一頁電位器曲線圖
		阻值 Resistance	"10K"为阻值书写形式, 表示阻值为10000Ω,

MECHANICAL SPECIFICATION 機械性能

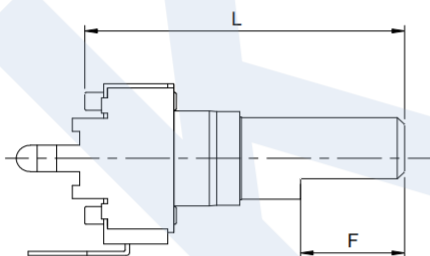
Total Rotational Angle 旋轉角度	$\square 280^{\circ} \pm 10^{\circ}$ $\square 300^{\circ} \pm 10^{\circ}$
Rotational Torque 旋轉力矩	10gf.cm~100gf.cm
Shaft Stop Strength 止檔強度	3kgf.cm

ELECTRICAL SPECIFICATION 電氣性能

Total Resistance Range 總阻值及誤差	$500\Omega < R < 1M\Omega : \pm 20\%$: $1K\Omega \geq R \geq 1M\Omega : \pm 30\%$
Resistance Taper 電阻特性曲線	See Potentiometer linear figure
Power Rating 負載功率	B taper 0.05W Other taper 0.025W
Max. Operating Voltage 最大工作電壓	50V AC/20V DC
Residual Resistance 殘留電阻	Between terminal 1~2: 20 Ω Max, 2~3: 20 Ω Max
Rotational Noise 旋轉雜音	Less than 100 mV, at DC 20 V
Insulation Resistance 絕緣電阻	100 M Ω min at 250 VDC.
Withstanding Voltage 耐電壓	1 minute at AC 250V
Rotational life 回轉壽命	15,000 cycles

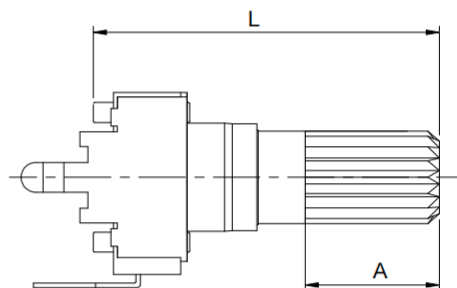
SHAFT TYPE AND SHAFT LENGTH 軸型及軸長 (RK93 Series)

F 軸




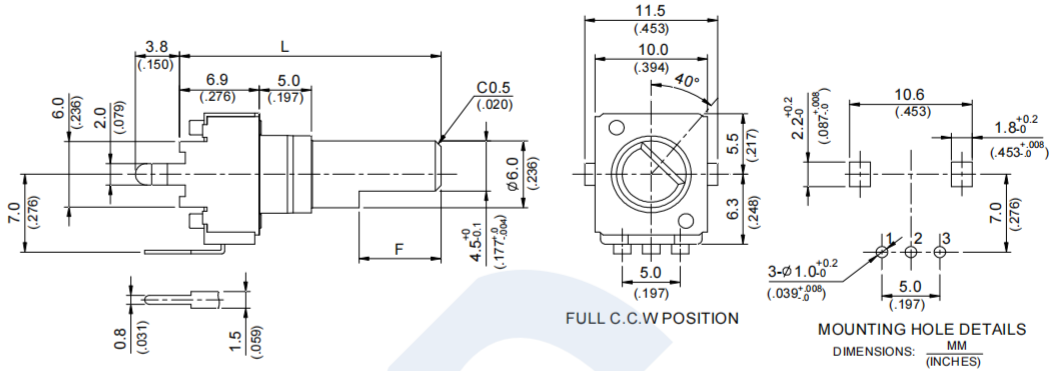

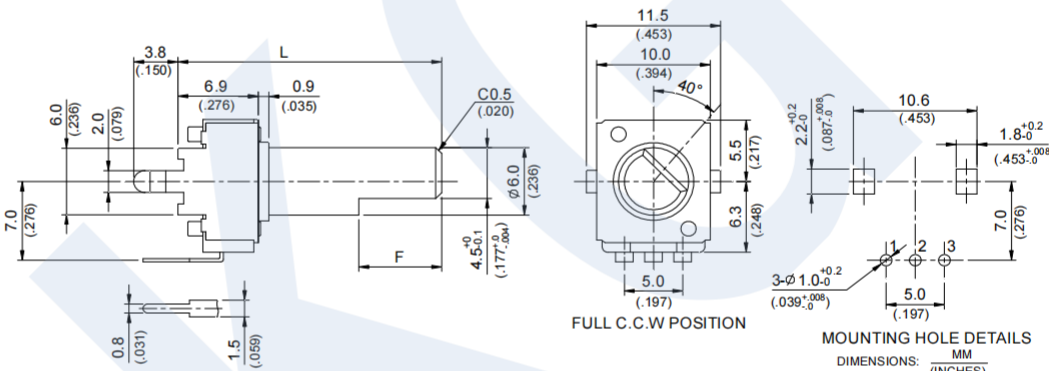
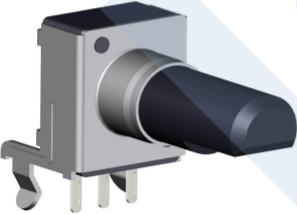
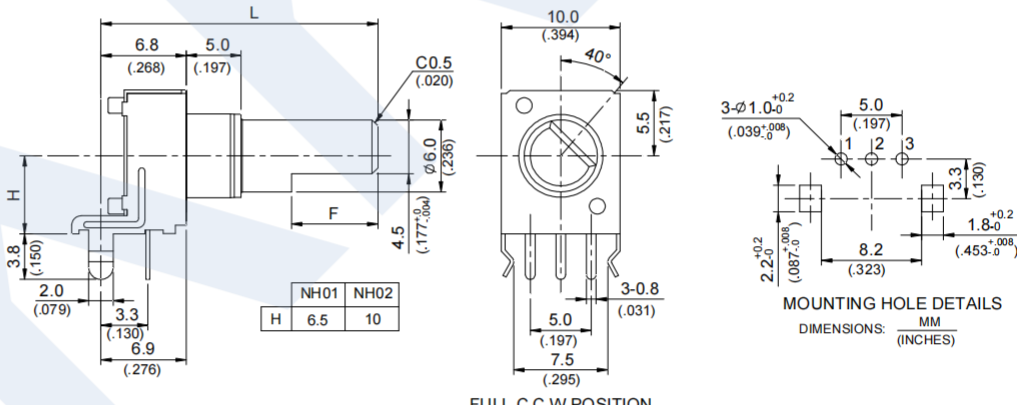
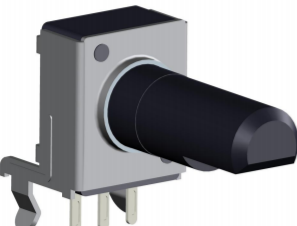
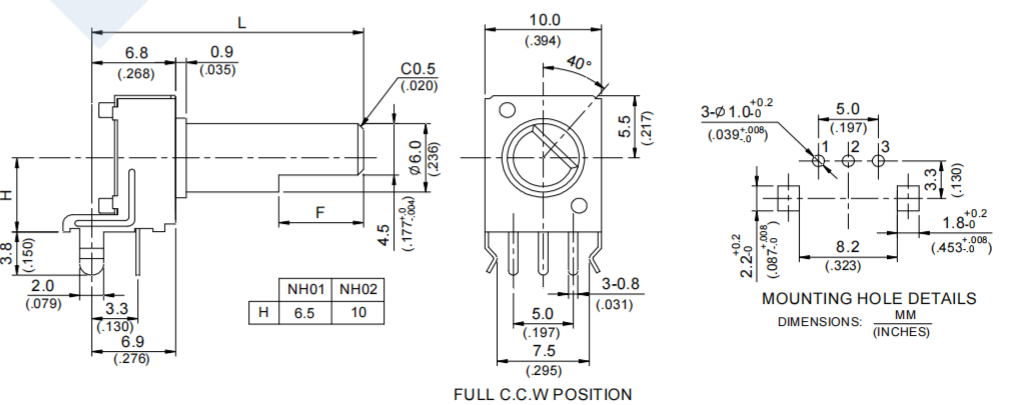
Length	F15	F20	F25	F30	F35
L	15	20	25	30	35
F	6	7	12	12	12

Y 軸



Length	F15	F20	F25	F30	F35
L	15	20	25	30	35
A	6	7	12	12	12

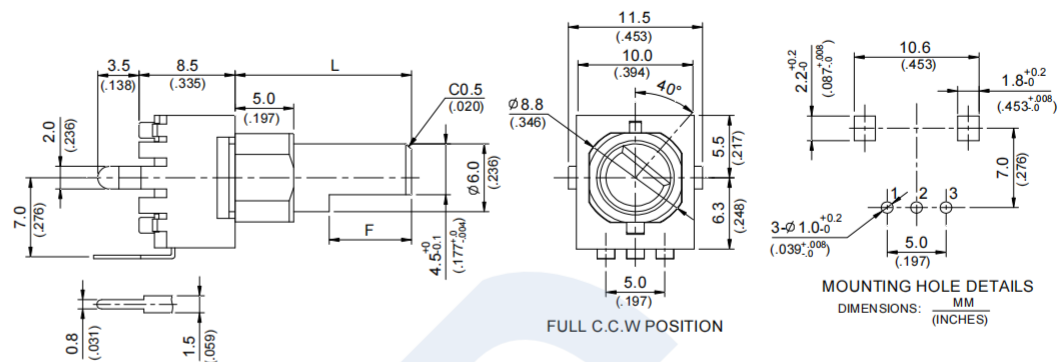
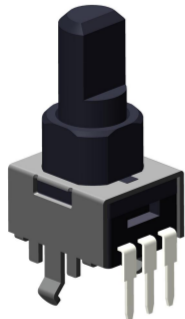
RK093 Series Dimensions

MODEL	DIMENNSIONS
RK093NV01 	 <p>FULL C.C.W POSITION</p> <p>MOUNTING HOLE DETAILS</p> <p>DIMENSIONS: $\frac{\text{MM}}{\text{(INCHES)}}$</p>
RK093NV01-A2 	 <p>FULL C.C.W POSITION</p> <p>MOUNTING HOLE DETAILS</p> <p>DIMENSIONS: $\frac{\text{MM}}{\text{(INCHES)}}$</p>
RK093NH01 	 <p>FULL C.C.W POSITION</p> <p>MOUNTING HOLE DETAILS</p> <p>DIMENSIONS: $\frac{\text{MM}}{\text{(INCHES)}}$</p>
RK093NH01-A2 	 <p>FULL C.C.W POSITION</p> <p>MOUNTING HOLE DETAILS</p> <p>DIMENSIONS: $\frac{\text{MM}}{\text{(INCHES)}}$</p>

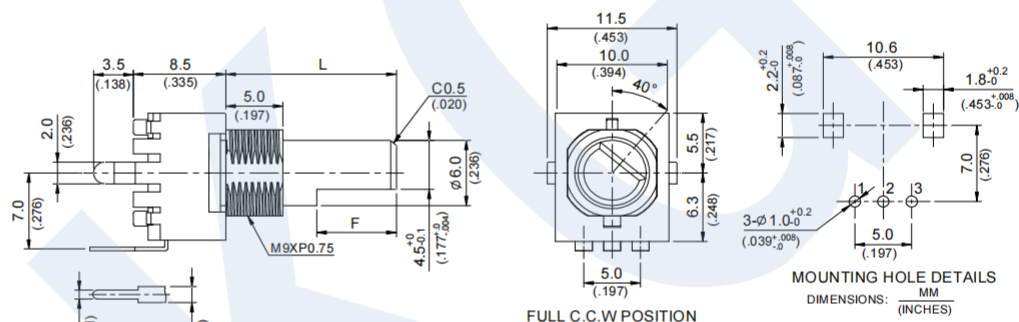
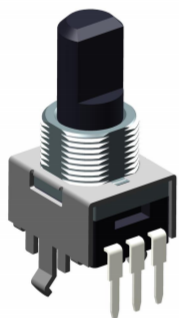
MODEL

DIMENNSIONS

RK093NV01-D5



RK093NV01-M9B5



RK093NH02-D5

