

REV	LOCATIONS	DESCRIPTION	DATE	REVISED	APPD

SPECIFICATIONS

Electrical

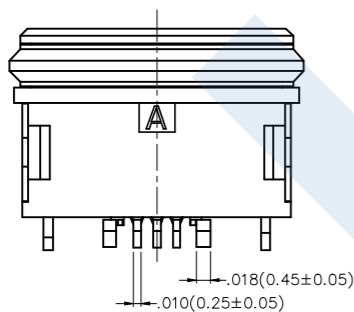
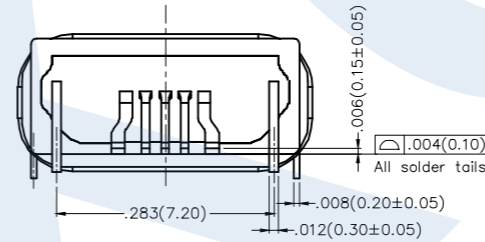
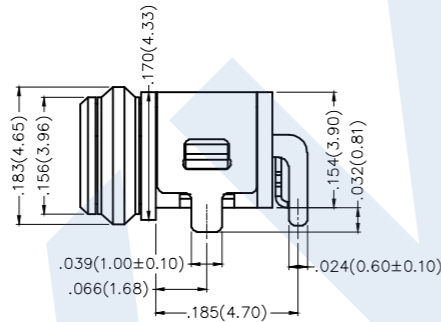
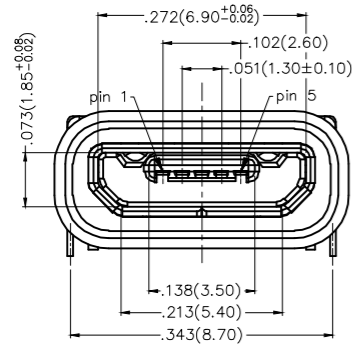
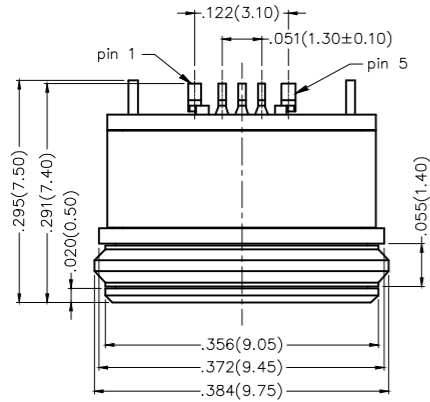
Current Rating: 0.5A(pin2,3,4), 3.0A(pin1,5)
Voltage Rating: 30V AC(rms)/DC
Contact Resistance: 30 mΩ Max(initial)
Withstanding Voltage: 500V AC r.m.s
Insulation Resistance: 1000 MΩ Min
Temperature Range-Operating: -40°C~+80°C

Mechanical

Insertion Force: 3.5kgf Max
Withdrawal Force: 0.8kgf Min(initial)
Durability: 10,000 cycles Min.

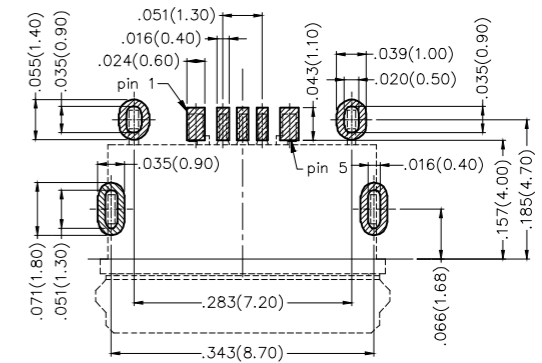
Material And Plating

Housing: Thermoplastic (UL94V-0), Black
Terminal: Copper Alloy/ Gold plated
Shell: Stainless steel/ Nickel plated
Outer shell: Thermoplastic (UL 94V-0) Black
U-shaped frame: Stainless steel/ Nickel plated
Waterproof ring: Rubber, White
Ingress protection rating: IPX7





Pinassignment:

Pins	1	2	3	4	5
Signal name	VBUS	D-	D+	ID	GND



Recommended P.C.Board Layout

General Tolerances: ±0.05mm

 THIRD ANGLE PROJECTION		GENERAL TOLERANCES (UNLESS SPECIFIED)		APPROVE BY FRANK	DATE 13/FEB/18	PART NO. USBM-1465	ITEM NO. FUS465			
		X.±.012(0.30)	X'±5"	CHECKED BY	DATE	TITLE Micro USB 5Circuits 90°Angle Female(SMT)				
DESIGN UNITS Inch (metric)		X.X±.008(0.20)	X'±2"	CHERRY	13/FEB/18			REV 0		SHEET NO. 1/1
		X.XX±.006(0.15)	XX'±1"	DRAWN BY	DATE					
SCALE 5:1	SIZE A4	X.XXX±.004(0.10)	XXX'±0.5"	KATE	13/FEB/18	KKG Electric Co., Ltd.				