

THE INFORMATION CONTAINED IN THIS DRAWING IS THE SOLE PROPERTY OF L-COM, INC. ANY REPRODUCTION IN PART OR WHOLE WITHOUT THE WRITTEN PERMISSION OF L-COM, INC. IS PROHIBITED.

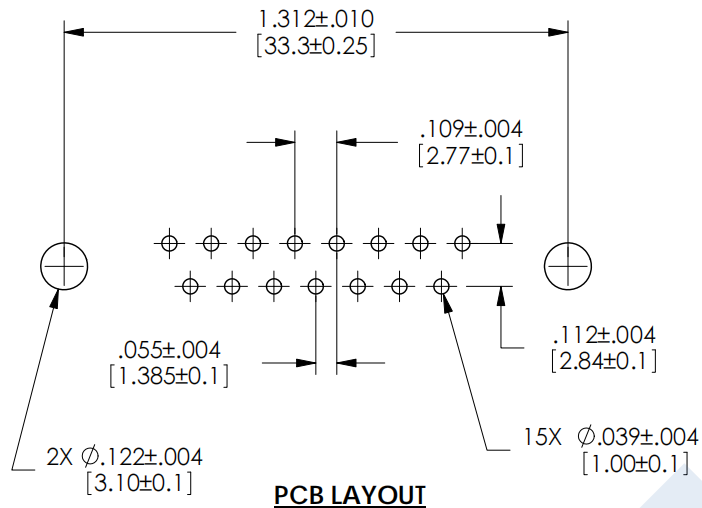
REVISIONS			
REV	DESCRIPTION	DATE	APPROVED
A	INITIAL RELEASE	5/3/11	D.GRIFFIN
B	ECN 6146: REMOVE SOURCE REFERENCE	5/7/12	D.FRISELLO

D

C

B

A



NOTES:

MATERIALS:

CONTACTS: BRASS
SHELLS: COLD ROLLED STEEL
INSULATOR: PBT, UL94V-0, BLACK
JACKSCREWS: BRASS

FINISH:

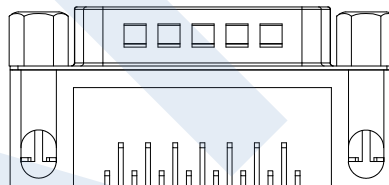
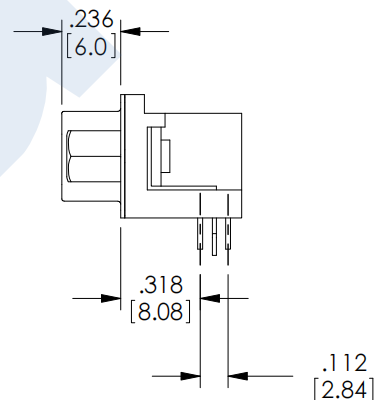
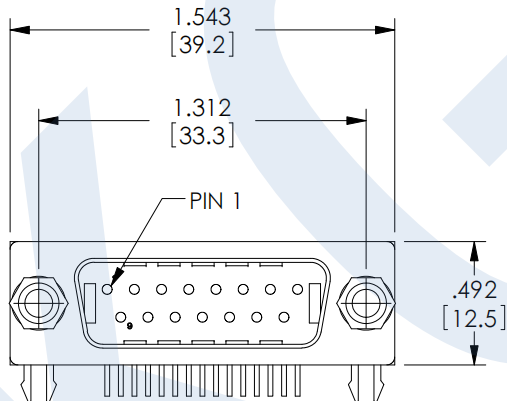
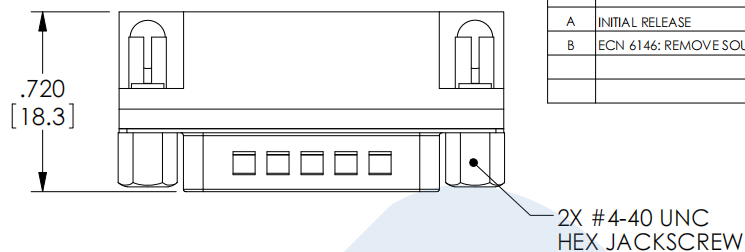
CONTACT SURFACES: GOLD FLASH
SHELL: NICKEL PLATED
JACKSCREWS: NICKEL PLATED

ELECTRICAL:

DIELECTRIC WITHSTANDING VOLTAGE: AC 1000 V r.m.s.
CONTACT CURRENT RATING: 1 AMPERE
INSULATION RESISTANCE: 500 MEGOHMS MINIMUM AT DC 500V
CONTACT RESISTANCE: 25 MILLIOHMS MAXIMUM

MISCELLANEOUS:

OPERATING TEMPERATURE: -55°C ~ 105°C
ALL DIMENSIONS ARE FOR REFERENCE ONLY
CONNECTOR SHALL BE PACKAGED 10 CONNECTORS PER TRAY AND
LABELED WITH STANDARD L-COM PRODUCT LABEL.



RoHS Compliant ✓

B

UNLESS OTHERWISE SPECIFIED, DIMENSIONS ARE IN INCHES [mm] OVERALL CABLE LENGTH TOLERANCE: ≤12 [305] = +1 [25] / -0 >12 [305] ≤60 [1524] = +2 [51] / -0 >60 [1524] ≤120 [3048] = +4 [102] / -0 >120 [3048] ≤300 [7620] = +6 [152] / -0 >300 [7620] = +5% / -0% ALL OTHER DIMENSIONAL TOLERANCES: X = ±.2 XX = ±.02 XXX = ±.005 PROJECTION 	APPROVALS	DATE		
	DRAWN BY D. CASTRO	4/1/11		
	CHECKED BY D. PARHAM	4/7/11		
	APPROVED BY S. SMITH	5/2/11	CATEGORY DATA	
CONFIGURATION DETAILS OF UNDIMENSIONED FEATURES MAY VARY			PRODUCT DESCRIPTION CONNECTOR, DB15M 90DEG PC	
COLOR VARIATIONS MAY OCCUR			SIZE A	FSCM NO. 43321
1AC06-012			SCALE: NONE	CAD FILE: SD15P-RA-PC.SLDDRW
			DWG. NO. D-SUB-15PD-1	REV. B
			SHEET 1 OF 1	