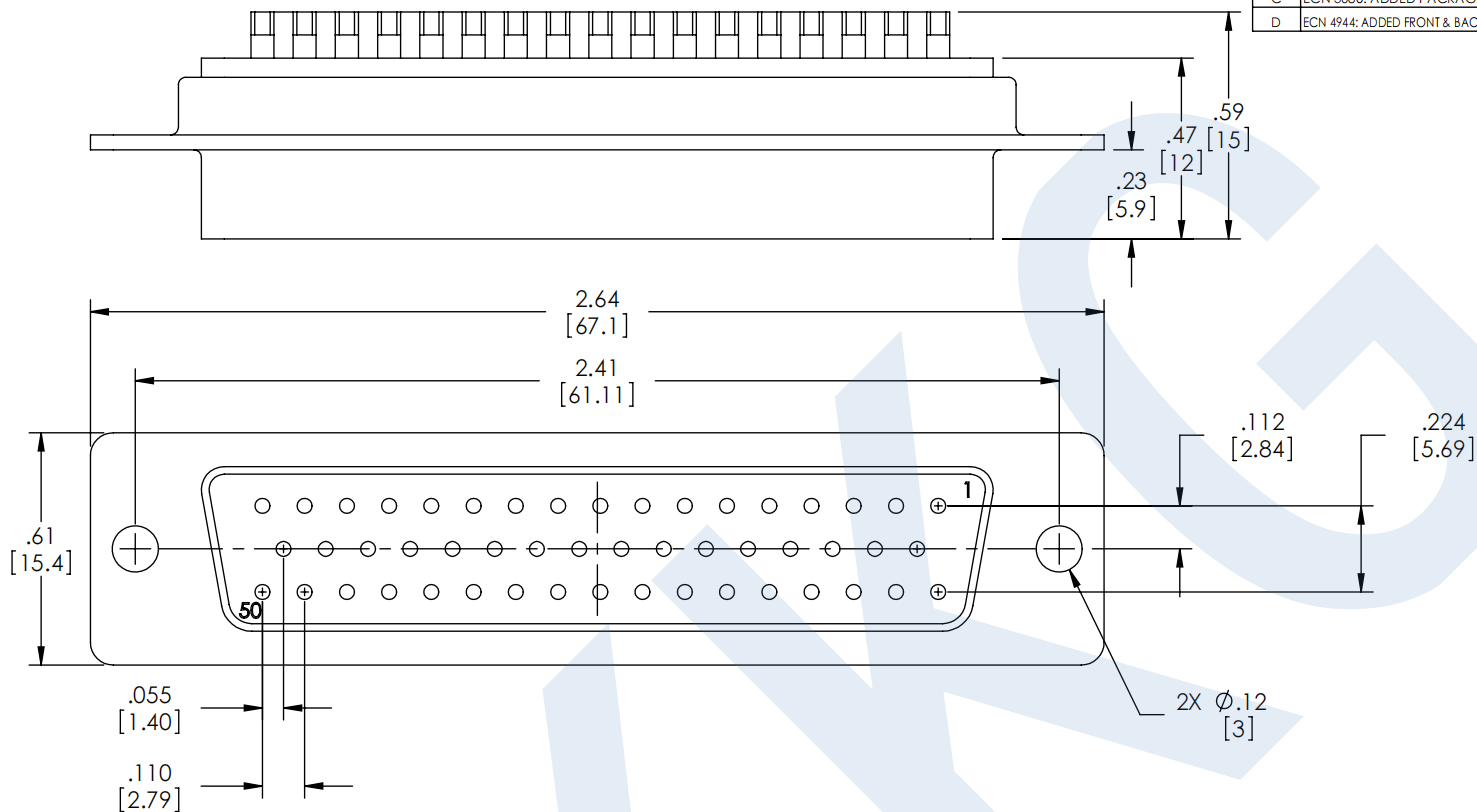


THE INFORMATION CONTAINED IN THIS DRAWING IS THE SOLE PROPERTY OF L-COM, INC. ANY REPRODUCTION IN PART OR WHOLE WITHOUT THE WRITTEN PERMISSION OF L-COM, INC. IS PROHIBITED.

REVISIONS			
REV	DESCRIPTION	DATE	APPROVED
A	INITIAL RELEASE	12/09/03	B.MAZEJKA
B	ECN 1682 - CHG'D COMP SPEC TABLE, GOLD FLASH PLATED	02/27/04	B.MAZEJKA
C	ECN 3680: ADDED PACKAGING TABLE	10/30/08	E.STAUBLE
D	ECN 4944: ADDED FRONT & BACK SHELL FINISH, ADDED PKG NOTE, DEL CURRENT RATING	8/3/10	D. CASTRO



**NOTES:**

**MATERIAL:**

CONNECTOR SHELL: STEEL  
CONNECTOR INSULATOR: THERMOPLASTIC, UL94V-0 RATED  
CONTACTS: COPPER ALLOY

**FINISH:**

FRONT SHELL: NICKEL PLATED  
BACK SHELL: TIN PLATED  
CONTACTS: GOLD FLASH IN CONTACT AREA OVER NICKEL PLATE  
SOLDER CUPS: TIN PLATED

**ELECTRICAL:**

DIELECTRIC WITHSTANDING VOLTAGE: 1000 VAC rms  
INSULATION RESISTANCE: 5000MΩ @ 500VDC

**MISCELLANEOUS:**

OPERATING TEMPERATURE: -55°C TO +105°C  
CONNECTOR SHALL BE PACKAGED IN ACCORDANCE WITH  
L-COM SPEC. PS-0031.

CATALOG #	PACKAGING
50PS	1/BAG
50PS -TRAY	40/TRAY

UNLESS OTHERWISE SPECIFIED, DIMENSIONS ARE IN INCHES [mm] OVERALL CABLE LENGTH TOLERANCE: ≤12 [305] = +1 [25] / -0 >12 [305] ≤60 [1524] = +2 [51] / -0 >60 [1524] ≤120 [3048] = +4 [102] / -0 >120 [3048] ≤300 [7620] = +6 [152] / -0 >300 [7620] = +3% / -0% ALL OTHER DIMENSIONAL TOLERANCES: .X = ±.2 .XX = ±.02 .XXX = ±.005 PROJECTION 	APPROVALS DRAWN BY B.MAZEJKA CHECKED BY C.McCORMICK APPROVED BY D.PARHAM	DATE 11/10/2003 12/08/2003 12/08/2003	 CATEGORY D-SUB-50PS	
	CONFIGURATION DETAILS OF UNDIMENSIONED FEATURES MAY VARY COLOR VARIATIONS MAY OCCUR	PRODUCT DESCRIPTION DB50P SOLDER CUP CONNECTOR	SIZE A	FSCM NO. 43321
		DWG. NO. D-SUB-50PS	REV. D	SCALE: NONE
		CAD FILE: SD50S.SLDDRW	SHEET 1 OF 1	