

**RK166    S    NV    01 – M7B5 – FB15A7 – B10K**

1	Model Series 產品系列	3	Product Form 產品形態	5	Bushing Type 軸套類型	7	Curve And Resistance 曲線及阻值
2	Model Series 產品系列	4	Design Code 設計代號	6	Shaft Type and Shaft Length 軸型及軸長		

**应用于：调音台、多媒体音响、功放及家用电器**

Application: mixer, multi - coal acoustics, power amplifier and household appliances

**主要功能：调节音量、调平衡、调压、调温、调光**

Main functions: adjust volume, balance, pressure, temperature and light

Ordering Information 订货说明		Code 代码	Specification 規格參數
1	Model Series 產品系列	RK166	See RK166 Series Dimensions 見 RK166 系列產品圖
2	With Switch 帶開關	S	With rotary switch 帶旋轉式開關
3	Product Form 產品形態	NH	See RK166 Series Dimensions 見 RK166 系列產品圖
4	Design Code 設計代號	01	
5	Bushing Type 軸套類型	M7B6.5	M7 Teeth Bushing, Bushing Length 6.5 M7 螺牙軸套，軸套長度 6.5mm
6	Shaft Type and Shaft Length 軸型及軸長	FB15A7	See RK166 axis dimension table 見 RK166 軸型尺寸表
7	Resistance Tap and Value 曲線及阻值	Curve 曲線	See the potentiometer graph on the last page 見最後一頁電位器曲線圖
		Resistance 阻值	"10K" as resistance writing form, indicating resistance value of 10000Ω,

### MECHANICAL SPECIFICATION 机械性能

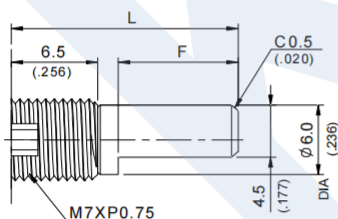
Total Rotational Angle 旋轉角度	300°±10°
Rotational Torque 旋轉力矩	20gf.cm~200gf.cm
Shaft Stop Strength 止檔強度	≥6kgf.cm
Shaft Wobble (mm p-p) 軸擺動	Within (0.7XL/20)mm p-p Max. L=Shaft Length

### ELECTRICAL SPECIFICATION 電氣性能

Total Resistance Range 總阻值及誤差	500Ω<R<1MΩ:±20% : 1KΩ≥R≥1MΩ:±30%
Resistance Taper 電阻特性曲線	See Potentiometer linear figure
Power Rating 負載功率	Linear taper 0.2W. Other taper 0.1W
Max. Operating Voltage 最大工作電壓	200V AC
Residual Resistance 殘留電阻	Between terminal 1~2: 20Ω Max, 2~3: 20Ω Max
Rotational Noise 旋轉雜音	Less than 100 mV
Insulation Resistance 絕緣電阻	100 MΩ min at 500 VDC.
Withstanding Voltage 耐電壓	1 minute at AC 500V
Rotational life 回轉壽命	15,000 cycles

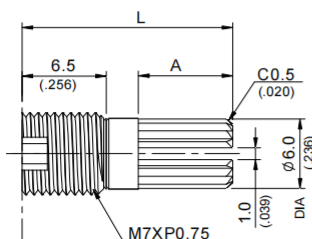
### SHAFT TYPE AND SHAFT LENGTH 軸型及軸長 (RK166 Series)

#### FB 軸(压铸轴)



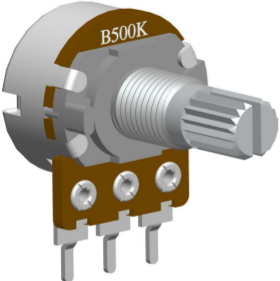
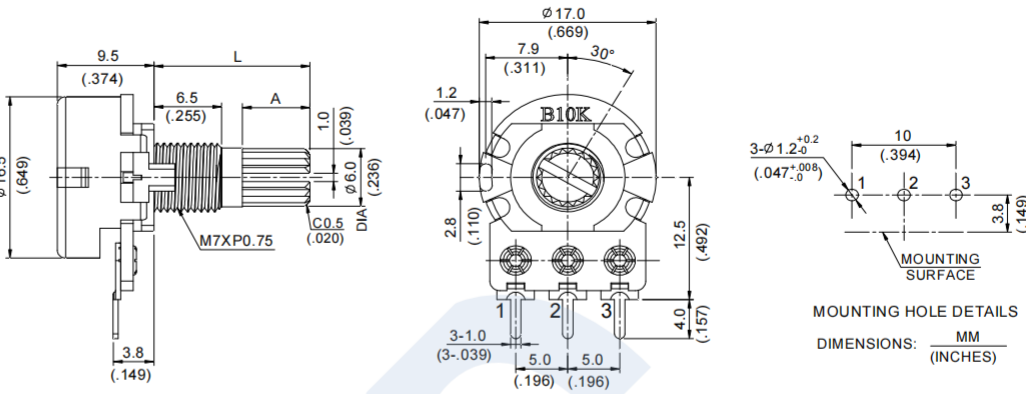
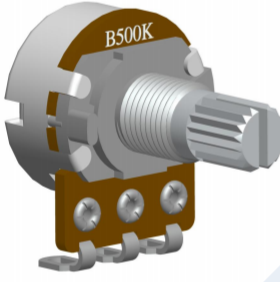
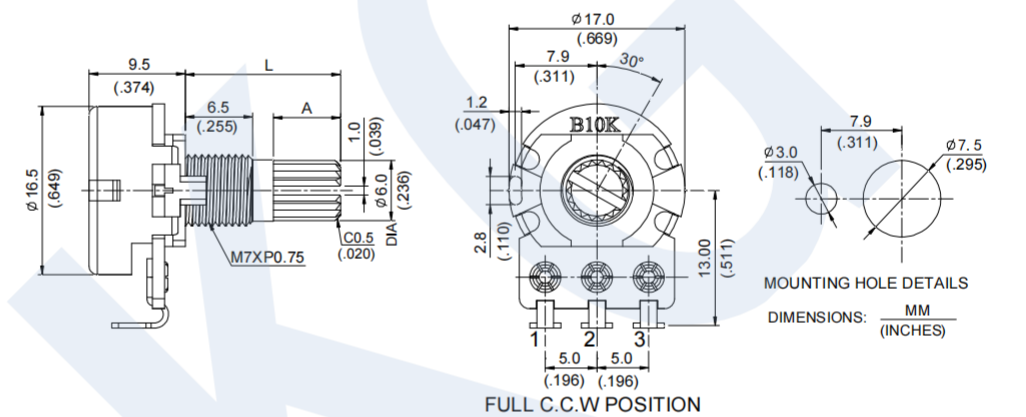
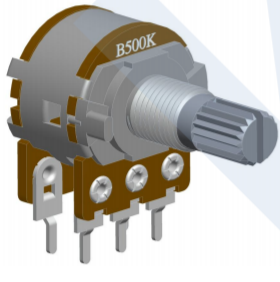
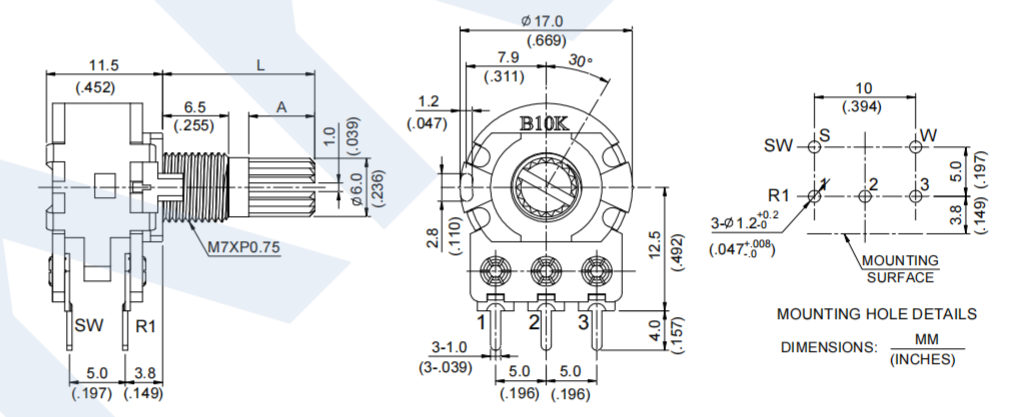
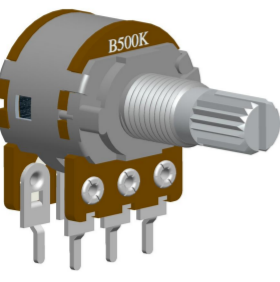
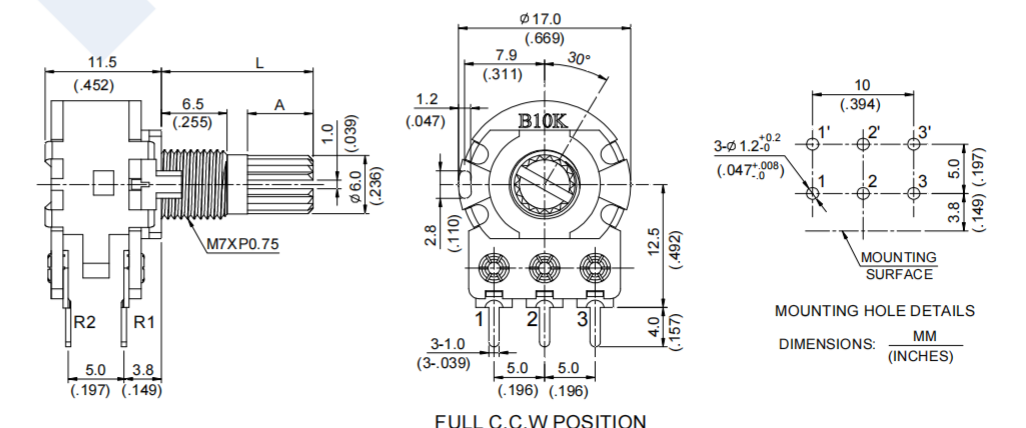
Length	FB15	FB20	FB25	FB30
L	15	20	25	30
F	7	12	12	12

#### YB 軸(压铸轴)



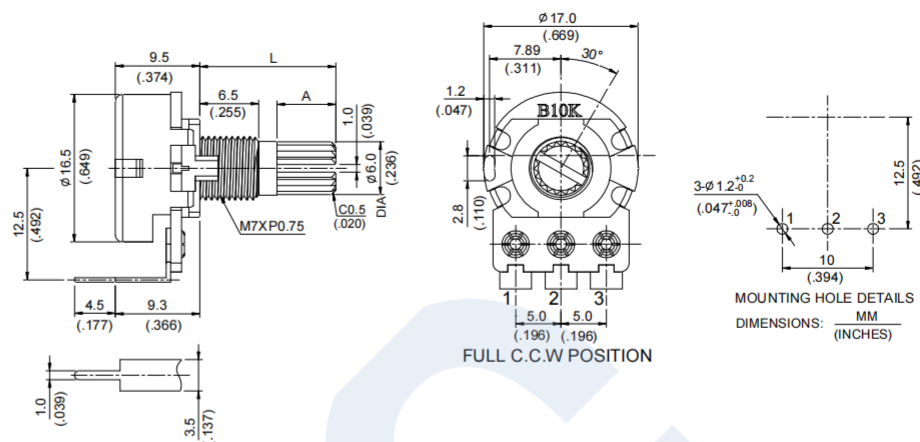
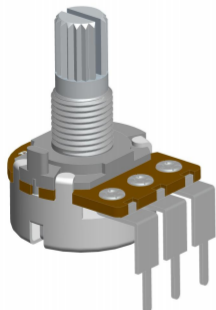
Length	YB15	YB20	YB25	YB30
L	15	20	25	30
F	6.5	11.5	16.5	21.5

### RK166 Series Dimensions

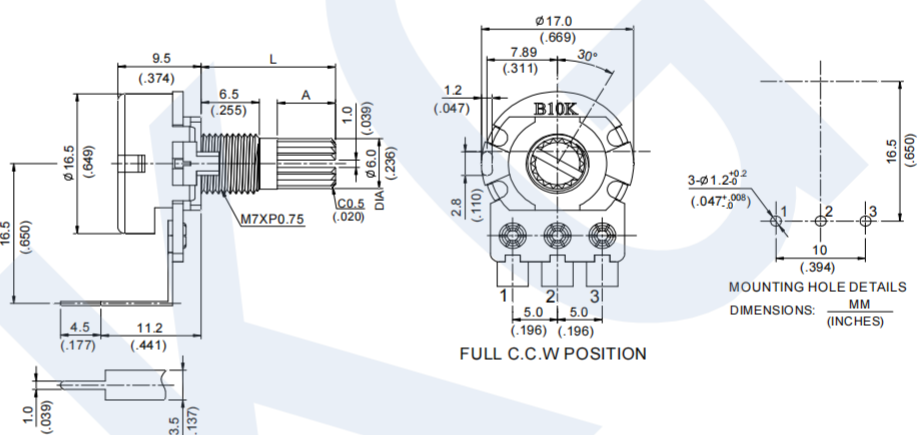
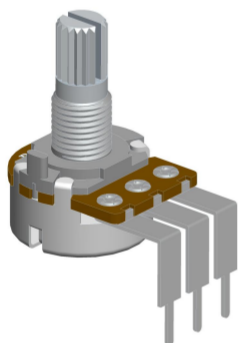
MODEL	DIMENNSIONS
<b>RK166NH01</b> 	 <p>MOUNTING HOLE DETAILS DIMENSIONS: <math>\frac{\text{MM}}{\text{(INCHES)}}</math></p>
<b>RK166NHT01</b> 	 <p>FULL C.C.W POSITION</p> <p>MOUNTING HOLE DETAILS DIMENSIONS: <math>\frac{\text{MM}}{\text{(INCHES)}}</math></p>
<b>RK166GH01</b> 	 <p>MOUNTING HOLE DETAILS DIMENSIONS: <math>\frac{\text{MM}}{\text{(INCHES)}}</math></p>
<b>RK166SNH01</b> 	 <p>FULL C.C.W POSITION</p> <p>MOUNTING HOLE DETAILS DIMENSIONS: <math>\frac{\text{MM}}{\text{(INCHES)}}</math></p>

## MODEL

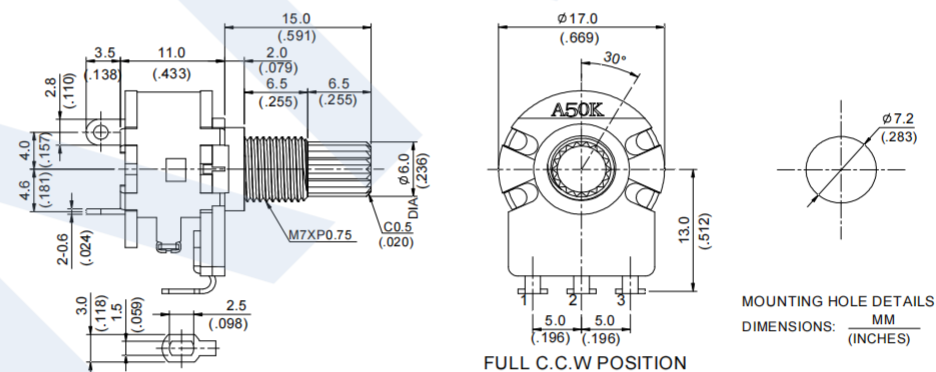
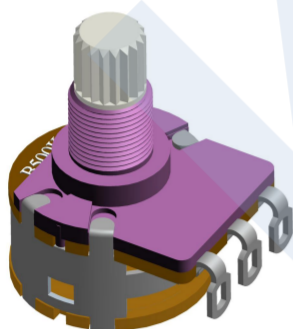
## RK166NV01



## RK166NV02



## RK166SNVTB01



RK166SNVTB01

