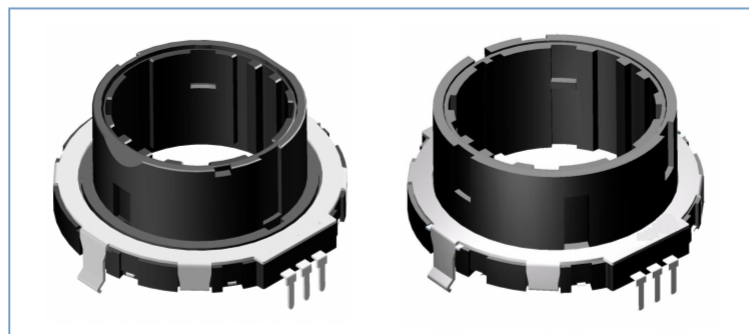
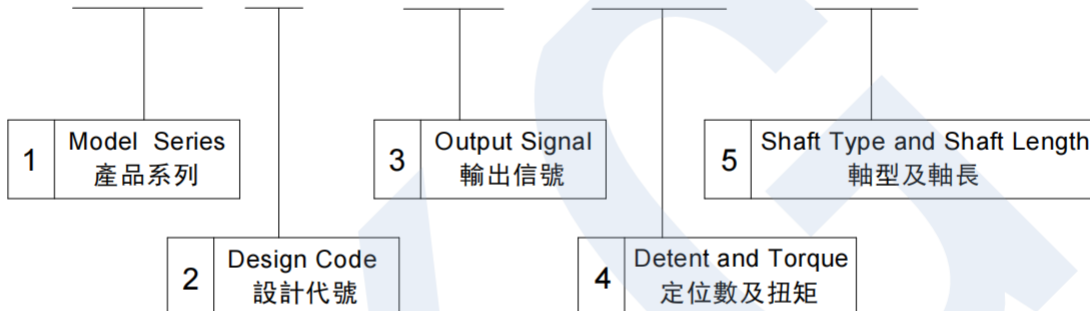


ROTARY TYPE ENCODER

35mm Hollow Size Series 35 中空型系列



EC35 12 - 15P - 30LC - R15



应用于：汽车音响、汽车空调、汽车导航、家用电器 Application: car audio, car air conditioning, car navigation, household appliances	主要功能：调节音量、调节温度、调频、功能切换 Main functions: adjust volume, temperature, frequency modulation and function switching
--	--

Ordering Information 訂貨說明		Code 代碼	Specification 規格參數			
1	Moder Series 產品系列	EC35	See EC35 Series Dimensions 見 EC35 系列產品圖			
2	Design Code 設計代號	12				
3	Pulse 脈衝數	12P	12 Pulse 12 脈衝			
		15P	15Pulse 15 脈衝			
4	Detent and Torque 定位數及扭矩	12	12Detent 12 定位	Torque 扭矩	LC	80±40gf.cm
		30	30 Detent 30 定位		HC	180±60gf.cm
5	Shaft Type and Shaft Length 軸型及軸長	R15	See EC35Series Dimensions 見 EC35 系列產品圖			

ROTARY TYPE ENCODER

35mm Hollow Size Series 35 中空型系列

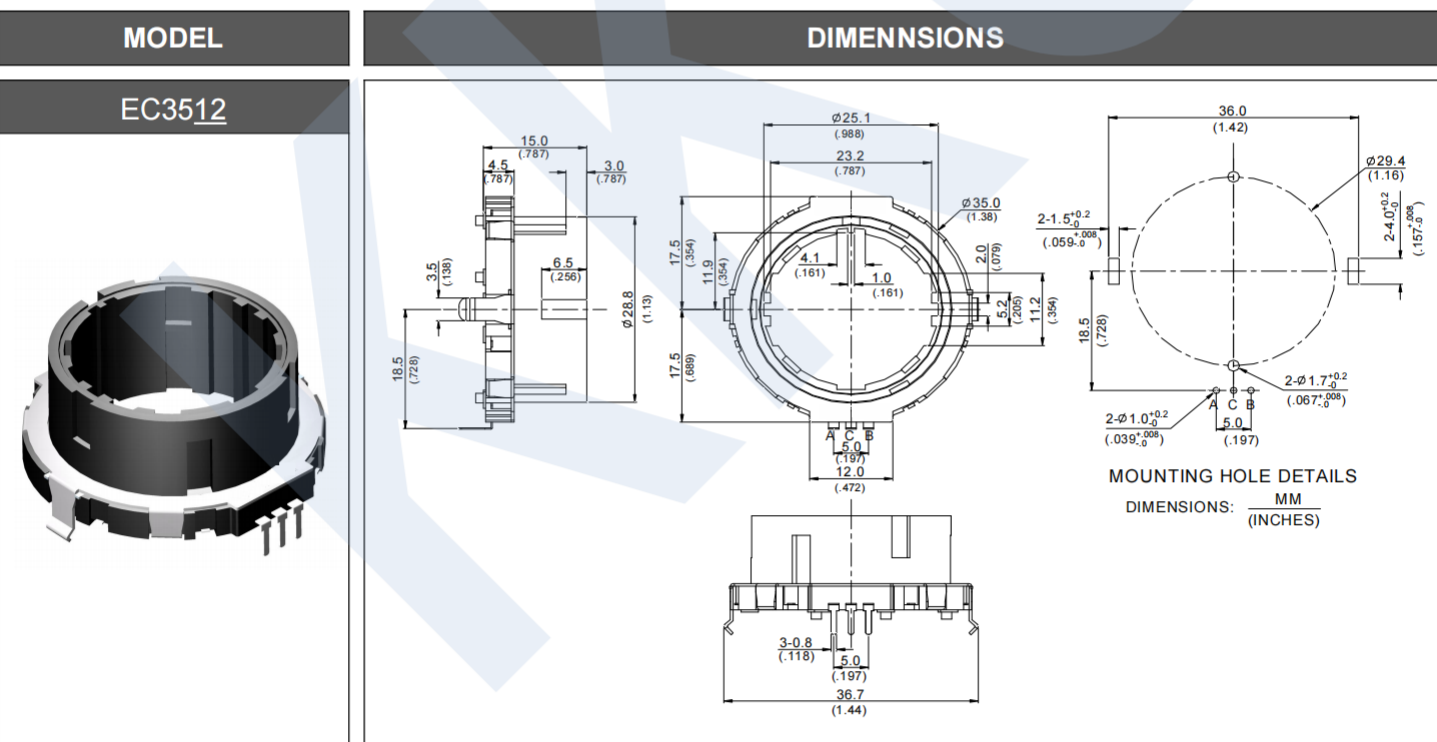
MECHANICAL SPECIFICATION 機械性能

Operating Temperature 工作溫度	-20℃~+70℃
Shaft Rotation Force 操作力矩	50gf.cm~300gf.cm
Soldering Heat 焊接溫度	260℃, 3~5sec
Push-pull Strength 軸推拉強度	5.1Kgf.cm
Total Rotation Angle 全回轉角度	360°

ELECTRICAL SPECIFICATION 電氣性能

Power Rating 額定功率	DC5V 10mA(1mA Min)
Insulation resistance 絕緣電阻	More than 100MΩ(AT 250V DC)
Contact resistance 接觸電阻	1Ω Max
Withstand Voltage 耐電壓	For 1 minute at 300V AC
Rotational life 回轉壽命	30,000 cycles

EC35 Series Dimensions

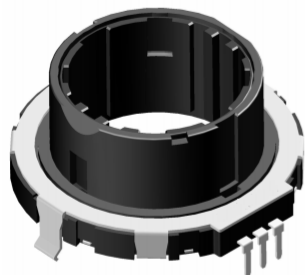


ROTARY TYPE ENCODER

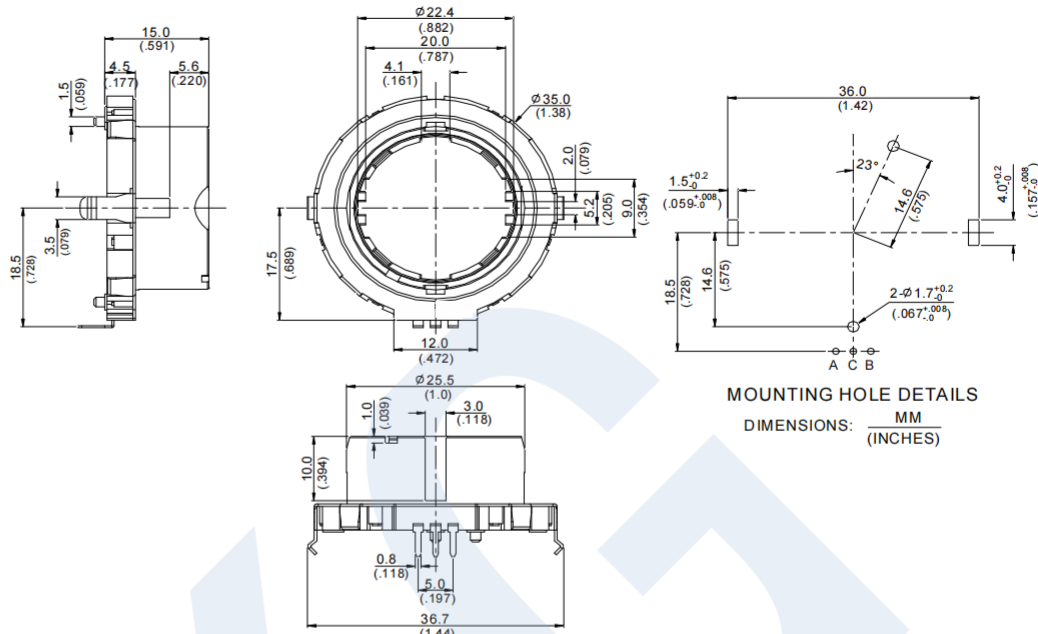
35mm Hollow Size Series 35 中空型系列

MODEL

EC3513



DIMENNSIONS



EC3514

