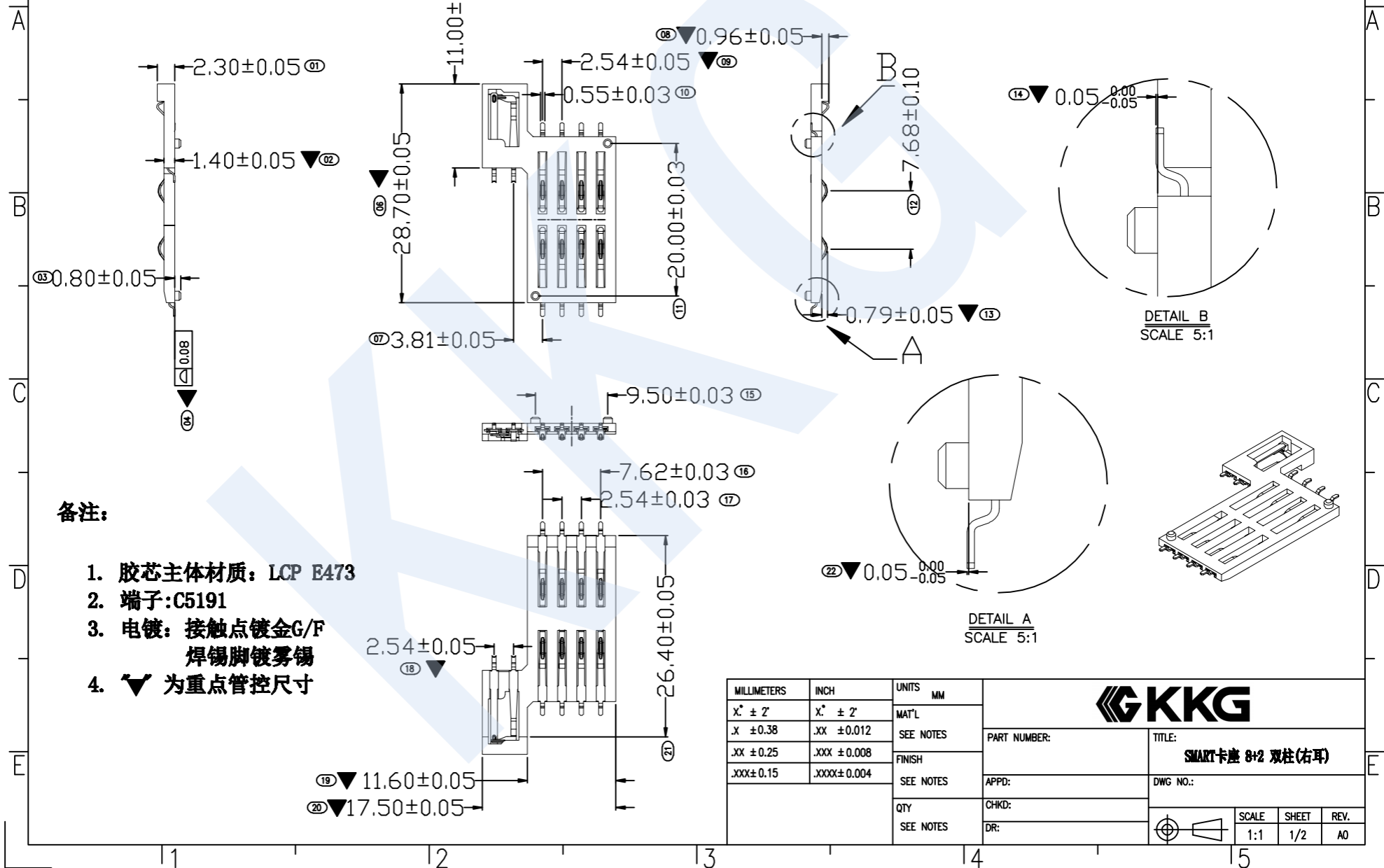
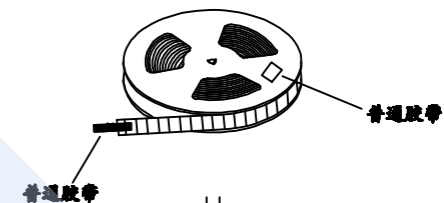
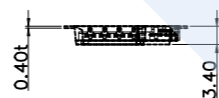
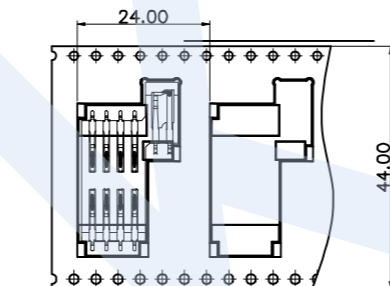
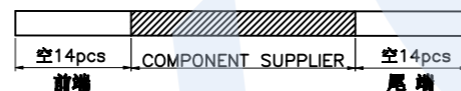
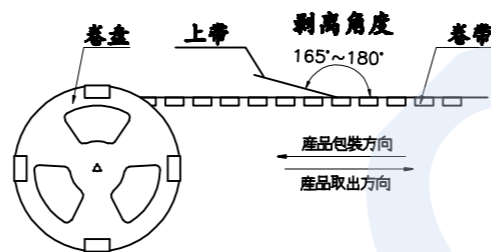
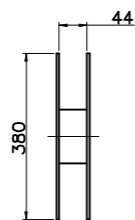


RoHS

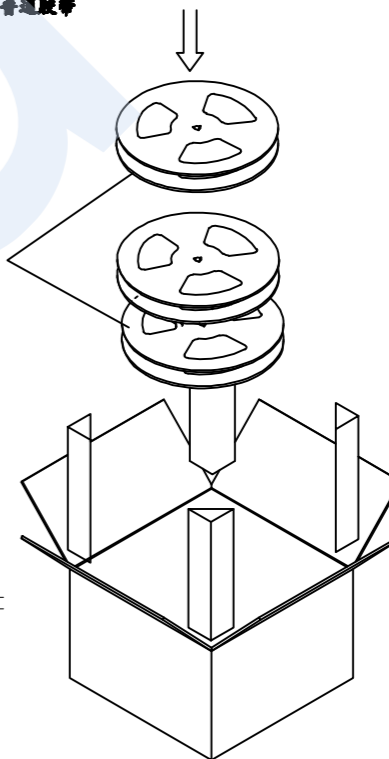
REV.	EC#	DESCRIPTION	DATE	DRAWING	CHECKED	APPROVED
A0		NEW RELEASE	05/22'20	ZHOU	/	WZX



RoHS



REL 盒 6 Pos

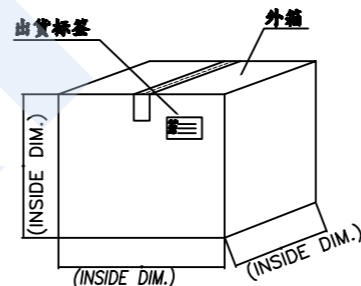


#### 1. 包装方式:

1. 使用半自动包装机, 先将透明上带送入导轨中, 并粘贴在上面, 其中初始空槽14pcs不要放产品, 然后将产品如图所示方向依次放入 卷带每个槽放1pcs. 最后需留14空槽不放产品.
1. 2. 用胶带将卷带及上透明带聚合在一起且在外, 在卷盘上贴上标签. 注明品名, 日期, 数量.
1. 3. 依图示, 将5pcs已装好成品的卷盘装入外箱.
1. 4. 将装好卷盘的外箱四角放入折叠板, 封箱后贴上外标签.

#### 2. 包装数量:

1000PCS/卷;  
6卷(6000pcs)/箱



MILLIMETERS	INCH	UNITS	MM				
X" ± 2"	X" ± 2"	MAT'L		PART NUMBER:		TITLE:	
.X ± 0.38	.XX ± 0.012	SEE NOTES		APPD:		DWG NO.:	
.XX ± 0.25	.XXX ± 0.008	FINISH		CHKD:		SCALE	
.XXX ± 0.15	.XXXX ± 0.004	SEE NOTES		DR:		SHEET	
		QTY				REV.	
		SEE NOTES				A0	