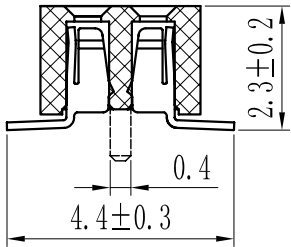
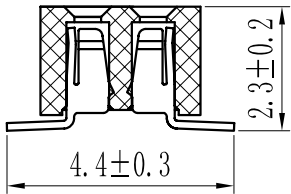
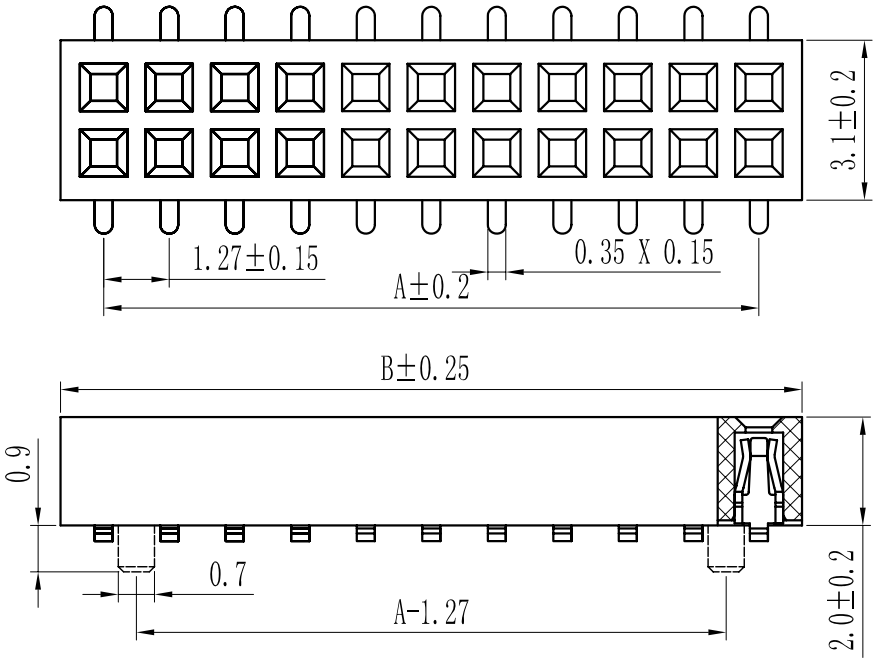


1		2		3		4		5		6		7		8													
ROHS														For reference only													
A		Pin數		尺寸A		尺寸B										A											
		2×2		1.27		2.94																					
		2×3		2.54		4.21																					
		2×4		3.81		5.48																					
		2×5		5.08		6.75																					
		2×6		6.35		8.02																					
		2×7		7.62		9.29																					
		2×8		8.89		10.56																					
		2×9		10.16		11.83																					
		2×10		11.43		13.10																					
B		2×11		12.70		14.37										B											
		2×12		13.97		15.64																					
		2×13		15.24		16.91																					
		2×14		16.51		18.18																					
		2×15		17.78		19.45																					
		2×16		19.05		20.72																					
		2×17		20.32		21.99																					
		2×18		21.59		23.26																					
		2×19		22.86		24.53																					
		2×20		24.13		25.80																					
C		2×21		25.40		27.07										C											
		2×22		26.67		28.34																					
		2×23		27.94		29.61																					
		2×24		29.21		30.88																					
		2×25		30.48		32.15																					
		2×26		31.75		33.42																					
		2×27		33.02		34.69																					
		2×28		34.29		35.96																					
		2×29		35.56		37.23																					
		2×30		36.83		38.50																					
D		2×31		38.10		39.77										D											
		2×32		39.37		41.04																					
		2×33		40.64		42.31																					
		2×34		41.91		43.58																					
		2×35		43.18		44.85																					
		2×36		44.45		46.12																					
		2×37		45.72		47.39																					
		2×38		46.99		48.66																					
		2×39		48.26		49.93																					
		2×40		49.53		51.20																					
E		2×41		50.80		52.47										E											
		2×42		52.07		53.74																					
		2×43		53.34		55.01																					
		2×44		54.61		56.28																					
		2×45		55.88		57.55																					
		2×46		57.15		58.82																					
		2×47		58.42		60.09																					
		2×48		59.69		61.36																					
		2×49		60.96		62.63																					
		2×50		62.23		63.90																					
F																F											
G																G											
H																H											
REV.		REVISION RECORD				DATE		UNIT: MM		SIZE: A4		0.000±0.08		X° X'±2°		DRAWN		TITLE: Pitch1.27mm Female Header, Dual Row, Plastic Height 2.0mm, SMT (with Local Peg) Type(U)		PART. NO:		DWG. NO:		REV: A0		SHEET: 1/1	
1		2		3		4		5		6		7		8													

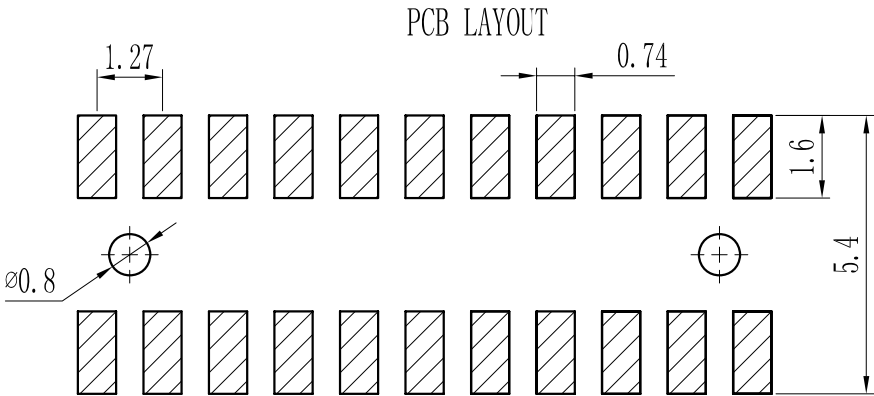
ROHS

For reference only

Pin數	尺寸A	尺寸B
2×2	1.27	2.94
2×3	2.54	4.21
2×4	3.81	5.48
2×5	5.08	6.75
2×6	6.35	8.02
2×7	7.62	9.29
2×8	8.89	10.56
2×9	10.16	11.83
2×10	11.43	13.10
2×11	12.70	14.37
2×12	13.97	15.64
2×13	15.24	16.91
2×14	16.51	18.18
2×15	17.78	19.45
2×16	19.05	20.72
2×17	20.32	21.99
2×18	21.59	23.26
2×19	22.86	24.53
2×20	24.13	25.80
2×21	25.40	27.07
2×22	26.67	28.34
2×23	27.94	29.61
2×24	29.21	30.88
2×25	30.48	32.15
2×26	31.75	33.42
2×27	33.02	34.69
2×28	34.29	35.96
2×29	35.56	37.23
2×30	36.83	38.50
2×31	38.10	39.77
2×32	39.37	41.04
2×33	40.64	42.31
2×34	41.91	43.58
2×35	43.18	44.85
2×36	44.45	46.12
2×37	45.72	47.39
2×38	46.99	48.66
2×39	48.26	49.93
2×40	49.53	51.20
2×41	50.80	52.47
2×42	52.07	53.74
2×43	53.34	55.01
2×44	54.61	56.28
2×45	55.88	57.55
2×46	57.15	58.82
2×47	58.42	60.09
2×48	59.69	61.36
2×49	60.96	62.63
2×50	62.23	63.90



Specification:  
Current Rating : 1AMP  
Temperature Range : -40℃to+105℃  
Contact Resistance : 20mΩ Max  
Insulation Resistance : 1000MΩ Min  
Withstanding Voltage : AC 500V  
Material:  
Insulator : Polyester (UL94V-0)  
Standard:PA6T/LCP  
Contact: Bronze  
Plating : Au or Sn Over 50u" Ni



F 12 9S-XXX X X-XX-X-XXX									
①	②	③	④	⑤	⑥	⑦	⑧	⑨	
① Series No: P=Pin Header F=Female Header B=Box Header E=Ejector Header	② Pitch: 08=0.80 10=1.00 12=1.27 20=2.00 25=2.54 39=3.96 50=5.08	③ Tail&Mounting Style: 90=Right Angle DIP Type 9S=Straight SMT Type 0D=Straight DIP Type 0S=horizontal SMT Type	④ No. of Pins: Single Row 101=1*1Pin 102=1*2Pin 140=1*40pin	⑤ Double Row 201=2*1Pin 202=2*2Pin 240=2*40pin	⑥ Insulator Color: A:Black B:Brown C:Red D:Orange E:Yellow F:Green G:Blue H:Violet J:Gray K:White P:Light Blue				
⑩ Material Type: A-PBT B-PA46 C-PA6T D-PA9T E-LCP	⑪ Plating Type: 0*-Sn-Au 1*-Ni 2*-Sn 3*-Matte-Tin 5*-Au 0A-Sn-Au 1u" 0F-Sn-Au 10u" 5A-Au 1u" 0B-Sn-Au 2u" 0G-Sn-Au 15u" 5B-Au 2u" 0C-Sn-Au 3u" 0H-Sn-Au 30u" 5C-Au 3u" 0D-Sn-Au 4u" 0I-Sn-Au 40u" 5D-Au 4u" 0E-Sn-Au 5u" 0J-Sn-Au 50u" 5J-Au 50u"	⑫ RoHS Request: 0:No Request 1:RoHS 2:HF (Halogen Free)	⑬ Customer Code						



GENERAL TOLERANCES

SCALE: 1:1

NAME

DATE



PART. NO:

DWG. NO:

REV: A0

SHEET: 1/1

LINEAR

ANGLES

0.0±0.25

X° REF±6°

0.00±0.15

X° ±3°

0.000±0.08

X° X'±2°

APPROVED

DESIGNER

DRAWN

TITLE:  
Pitch1.27mm Female Header, Dual Row,  
Plastic Height 2.0mm, SMT (with Local Peg) Type(U)