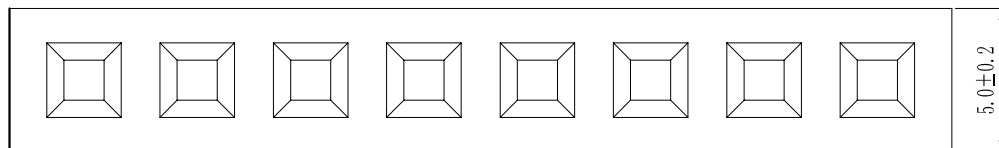


ROHS

For reference only

A

Pin数	尺寸A	尺寸B
1X2	3.96	7.92
1X3	7.92	11.88
1X4	11.88	15.84
1X5	15.84	19.80
1X6	19.80	23.76
1X7	23.76	27.72
1X8	27.72	31.68
1X9	31.68	35.64
1X10	35.64	39.60
1X11	39.60	43.56
1X12	43.56	47.52
1X13	47.52	51.48
1X14	51.48	55.44
1X15	55.44	59.40
1X16	59.40	63.36
1X17	63.36	67.32
1X18	67.32	71.28
1X19	71.28	75.24
1X20	75.24	79.20
1X21	79.20	83.16
1X22	83.16	87.12
1X23	87.12	91.08
1X24	91.08	95.04
1X25	95.04	99.00
1X26	99.00	102.96
1X27	102.96	106.92
1X28	106.92	110.88
1X29	110.88	114.84
1X30	114.84	118.80
1X31	118.80	122.76
1X32	122.76	126.72
1X33	126.72	130.68
1X34	130.68	134.64
1X35	134.64	138.60
1X36	138.60	142.56
1X37	142.56	146.52
1X38	146.52	150.48
1X39	150.48	154.44
1X40	154.44	158.40



B

Specification:

Current Rating : 7AMP

Temperature Range : -40°C to +105°C

Contact Resistance : 20mΩ Max

Insulation Resistance : 1000M $\Omega$  Min

Withstanding Voltage : AC 500V

Material:

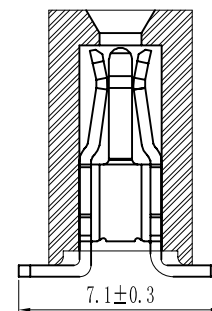
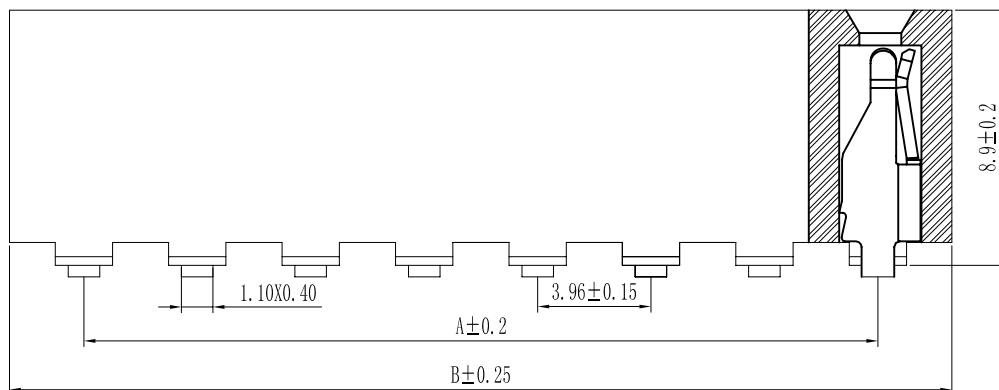
Insulator : Polyester (UL94V-0)

Standard: PA6T/LCP

Contact: Bronze

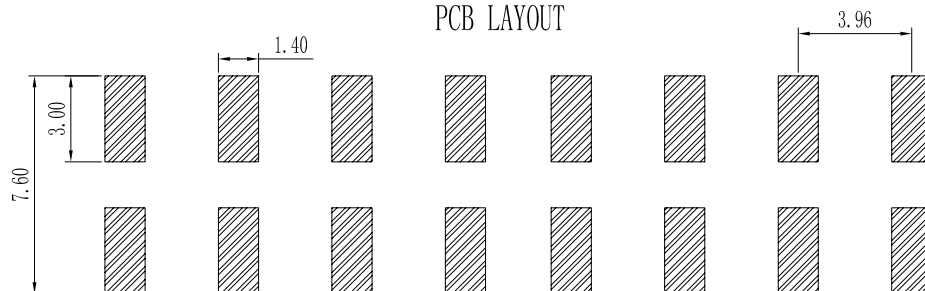
Plating : Au or Sn Over 50u" Ni

C



D

## PCB LAYOUT



F

F 39 9S-XXX				X X-XX-X-XXX			
①	②	③	④	⑤	⑥	⑦	⑧
① Series No:	② Pitch:	③ Tail&Mounting Style:	④ No. of Pins:	⑤ Insulator Color:			
P=Pin Header	08=0.80	9D=Right Angle DIP Type	Single Row	Double Row	A:Black B:Brom C:Red		
F=Female Header	10=1.00	9S=Straight SMT Type	101=1*1Pin	201=2*1Pin	D:Orange E:Yellow F:Green		
B=Box Header	12=1.27	0B=Straight DIP Type	102=1*2Pin	202=2*2Pin	G:Blue H:Violet J:Gray		
E=Ejector Header	20=2.00	0S=Horizontal SMT Type	103=1*3Pin	203=3*3Pin	K:White L:Light Blue		
	25=2.54		140=1*40pin	240=2*40pin			
	39=3.96						
	50=5.08						
⑥ Material Type:				⑦ Plating Type:		⑧ RoHS Request:	
A=PBT	08-Sn-Au	1*-Ni	2*-Sn	3*-Matte-Tin	5*-Au	0:No Request	⑨ Customer Code
B-PA66	0A-Sn-Au	1u*	0F-Sn-Au	10u*	5A-Au 1u*	1:RoHS	
C-PA6T	0B-Sn-Au	2u*	0G-Sn-Au	15u*	5B-Au 2u*	2:HF (Halogen Free)	
D-PA9T	0C-Sn-Au	3u*	0H-Sn-Au	30u*	5C-Au 3u*		
E-LCP	0D-Sn-Au	4u*	0I-Sn-Au	40u*	5D-Au 4u*		
	0E-Sn-Au	5u*	0J-Sn-Au	50u*	5J-Au 50u*		

G

				GENERAL TOLERANCES		SCALE: 1:1	NAME	DATE		PART. NO:	
				LINEAR	ANGLES	APPROVED					
				0. 0±0. 25	X° REF±6°		DESIGNER				
			UNIT: MM	0. 00±0. 15	X° ±3°	Pitch3. 96mm Female Header, Single Row, Plastic Height 8. 9mm, SMT Type(U)				REV:	A0
REV.	REVISION RECORD	DATE	SIZE: A4	0. 000±0. 08	X° X' ±2°	DRAWN					

H

H