


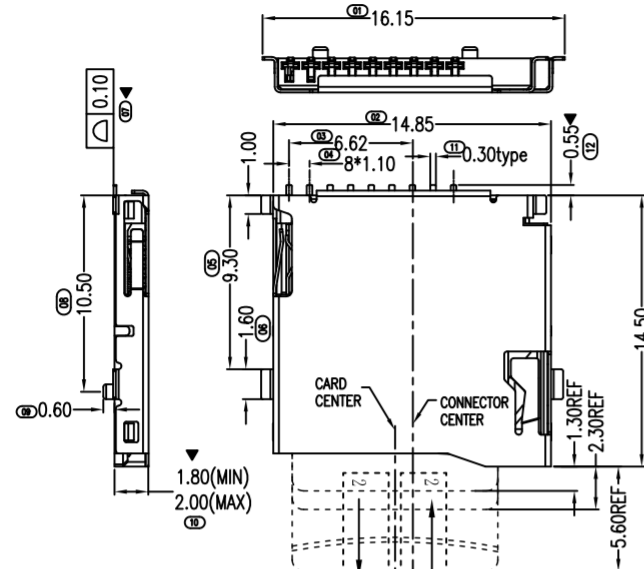
REV.	EC#	DESCRIPTION	DATE	DRAWING	CHECKED	APPROVED
A		NEW RELEASE	06/16'13	HAIYONG	——	HAIYONG
A1		增加新包装方式(增加护角, 珍珠棉, 更改纸箱规格)	02/20'14	HAIYONG		HAIYONG

NOTES:
ELECTRICAL CHARACTERISTICS
CONTACT CURRENT RATING:0.5A
DIELECTRIC WITHSTANDING VOLTAGE:AC 500V
INSULATION RESISTANCE:500MQ MIN
CONTACT RESISTANCE:100mQ MAX
ENVIRONMENTAL
TEMPERATURE RANGE: -25°C TO +85°C
MECHANICAL CHARACTERISTICS
MATING CYCLES:5000 INSERTIONS
INSERTION/OUT FORCE:0.1-4.0KGF
MATERIAL
INSULATOR: HIGH TEMPERATURE PLASTIC UL94V-0
COLOR:BLACK
CONTACT: COPPER ALLOY
SHELL: STAINLESS
SPRING:SWP
PLATING:
CONTACT
UNDERPLATE: NICKEL 40u".
CONTACT AREA: GOLD FLASH OVER NICKEL 40u" .
SOLDER AREA: TIN 80u" MIN OVER NICKEL 40u" .
SHELL:PLATE 30u"NICKEL MIN OVER ALL

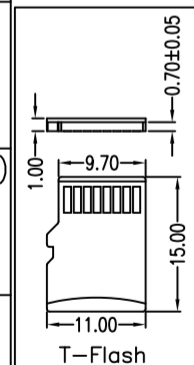
T-F铁壳	1PC
T-F线黄	1PC
T-F弹簧	1PC
T-F 9PIN端子	1SET
T-F滑块	1PC
T-F主体胶芯	1PC
规格	数量

MILLIMETERS	INCH	UNITS	MM		
X° ± 2'	X° ±	MAT'L			
.X ±0.35	.XX ±	SEE NOTES		PART NUMBER:	TITLE: T-FLASH 外焊卡座(卷装)
.XX ±0.25	.XXX ±	FINISH		APPD: HaiYong	DWG NO.:
.XXX ±0.15	.XXXX±	SEE NOTES		CHKD: ---	
		QTY		DR: YZZ	
		SEE NOTES			

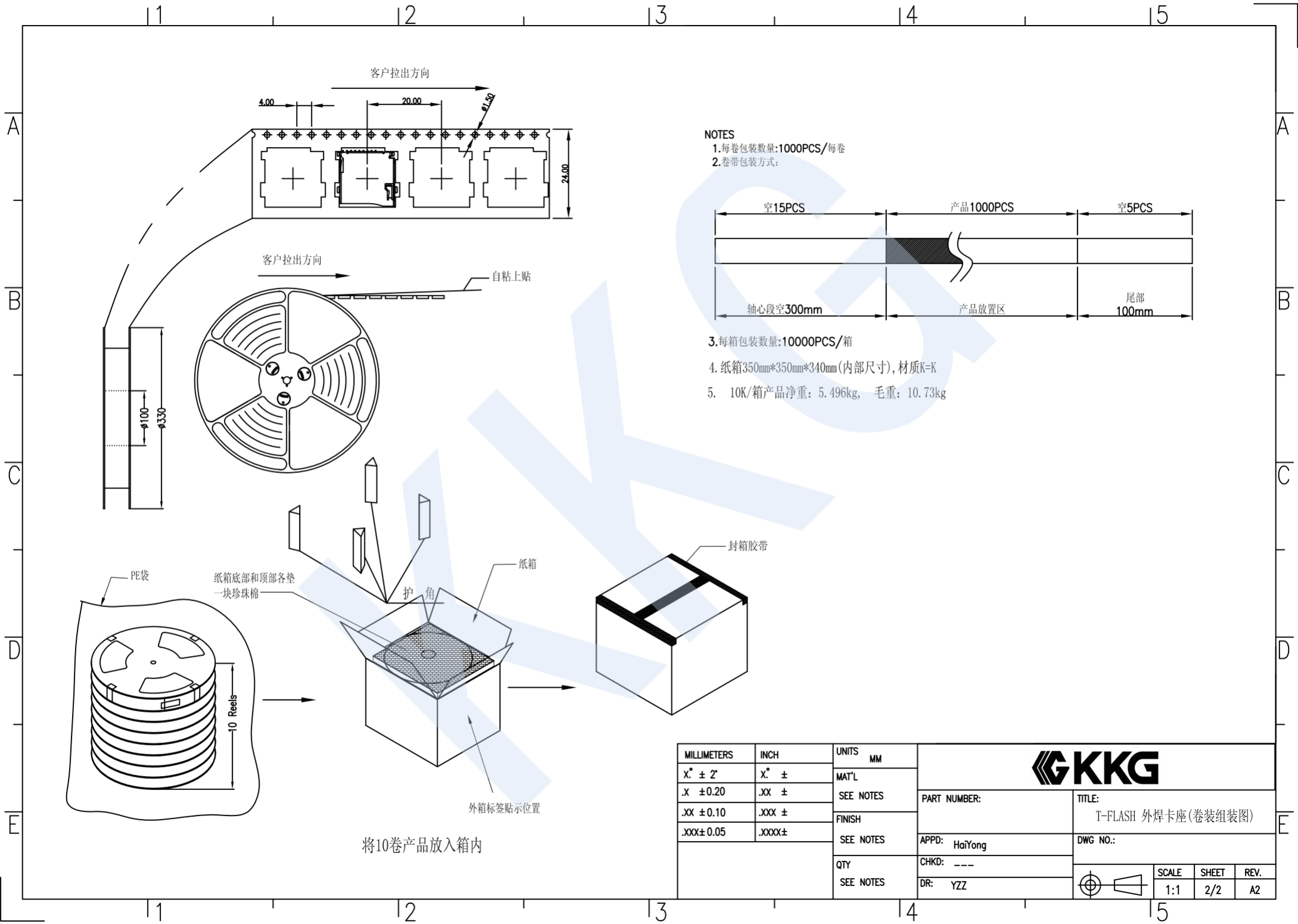
SCALE	SHEET	REV.
1:1	1/2	A1




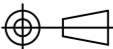
RECOMMENDED P.C.B HOLE LAYOUT
COMPONENT SIDE VIEW(TOLERANCE: +/-0.05)



PIN NO.	NAME	YTYPE	DESCRIPTION
1	DAT2	I/O/PP	DATE LINE(BIT2)
2	CD/DAT3	I/O/PP	CARD DETECT DATE LIN(BIT3)
3	CMD	PP	COMMAND RESPONSE
4	VDD	S	SUPPLY VOLTAGE
5	CLX	I	CLOCK
6	VSS	S	SUPPLY VOLTAGE GROUND
7	DAT0	I/O/PP	DATE LINE(BIT0)
8	DAT1	I/O/PP	DATE LINE(DIT1)



MILLIMETERS	INCH	UNITS	MM		
X° ± 2°	X° ±	MAT'L			
.X ± 0.20	.XX ±	SEE NOTES		PART NUMBER:	TITLE: T-FLASH 外焊卡座(卷装组装机)
.XX ± 0.10	.XXX ±	FINISH		APPD: HaiYong	DWG NO.:
.XXX ± 0.05	.XXXX ±	SEE NOTES		CHKD: ---	
		QTY		DR: YZZ	
		SEE NOTES			

	SCALE	SHEET	REV.
1:1	2/2	A2	