

2.54mm Pitch wire to board connectors

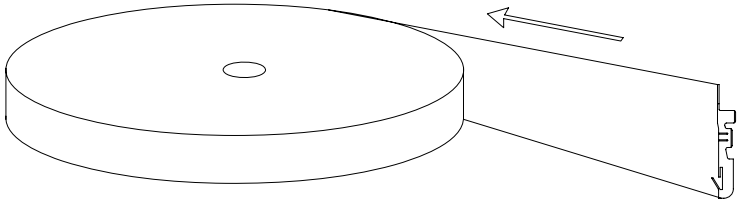
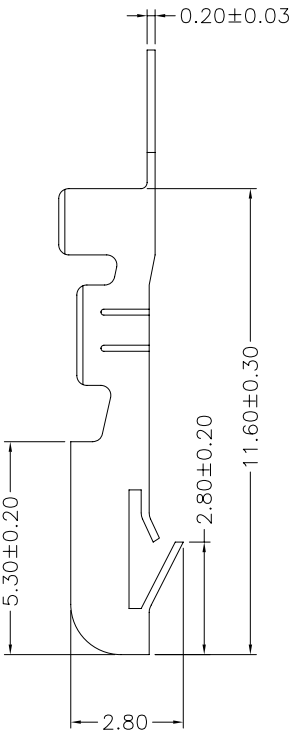
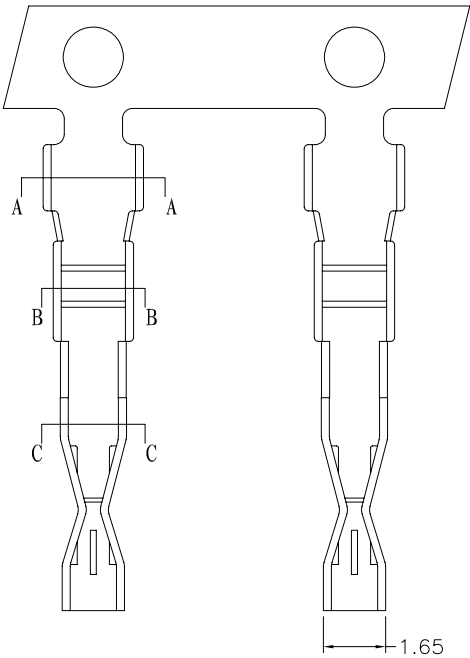
REVISION DATA			
ITEM	DESCRIPTION	DATE	REMARK
B	增加端子收料示意图	2011.10.25	高雷
C	版本更新	2012.2.22	高雷
D	版本更新	2015.11.4	杨玉

SPECIFICATIONS

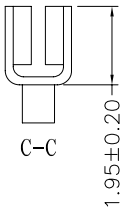
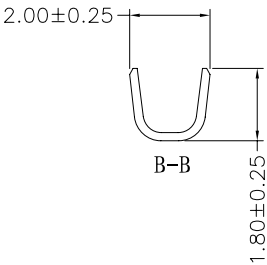
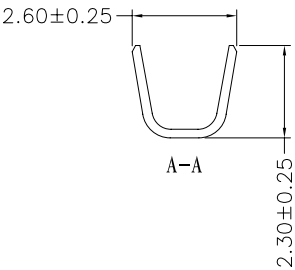
- Voltage rating: 250V AC/DC
- Current rating: 4A AC/DC
- Withstanding Voltage:1000V AC/minute
- Insulation resistance:1000MΩ Min.
- Temperature range: -25° C - +85° C
- Contact resistance:20mΩ Max.

TERMINAL

- Part No.: KY-2514TBS-10
- Thickness: 0.20mm
- Material: Brass
- Finish: Tin Plated
- Q' TY: 1000 Pcs/Bag



电镀后的收料方向
(打线开口朝外)



绘图 (DRAWN)	杨玉	投影 (PROJECT)		公差 (TOLERANCE)		料号 (PART NO)	KY-2514TBS-10	页次 (PAGE)
		单位 (UNIT)	mm	0.0	± 2°	图号 (DRAW NO)	LJ1KY-2514TBS-10	1/1
		比例 (SCALE)	FIT	0.0	± 0.30	品名 (NAME)		
		版本 (EDITION)	D	0.00	± 0.20			
核准 (APPROVE)		日期 (DATE)	2015. 11. 4	0.000	± 0.10	2.54mm PITCH TERMINAL		