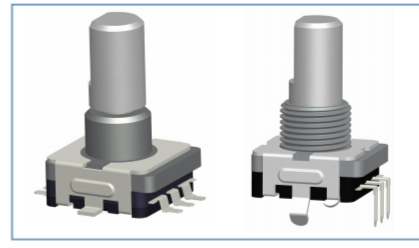
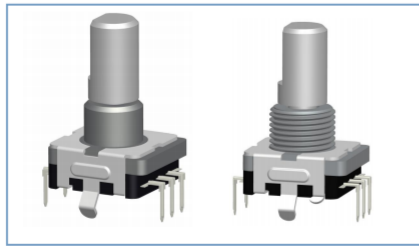


ROTARY TYPE RESER SWITCH

11mm Size Metal Shaft Series 11 型金屬軸系列



RS11 12 S - 2P - HC - M8B7 - F15A7

1 Model Series
產品系列

2 Design Code
設計代號

3 With Switch
帶開關

4 Output Signal
輸出信號

5 Torque
扭矩

6 Bushing Type
軸套類型

7 Shaft Type and Shaft Length
軸型及軸長

应用于：汽车音响、汽车导航、调音台、多媒体音响及功放、家用电器

Application: car audio, carnavigation, mixing station, multimedia audio and power amplifier, household appliances

主要功能：翻页、调频、调音量、菜单选择

Main functions: page turning, frequency modulation, tuning quantity, menu selection

Ordering Information 訂貨說明		Code 代碼	Specification 規格參數
1	Model Series 產品系列	RS11	See RS11 Series Dimensions 見 RS11 系列產品圖
2	Design Code 設計代號	12	
3	With Switch 帶開關	S	With Momentary Switch 帶瞬時接觸開關
			No Switch 無開關
4	Pulse 脈衝數	2P	2 Pulse 2 脈衝
5	Torque 扭矩	LC	100±20gf.cm
		HC	150±30gf.cm
		HHC	180±40gf.cm
6	Bushing Type 軸套類型	M8B5	M7 Threaded Bushing, Bushing Length 5mm/7mm M7 螺紋，軸套長度可選 5mm/7mm
		M8B7	
		B5	Φ7 Plain Bushing, Bushing Length 5mm/7mm Φ7 無螺紋，軸套長度可選 5mm/7mm
		B7	
7	Shaft Type and Shaft Length 軸型及軸長	F15A7	See RS11 axis dimension table 見 RS11 軸型尺寸表

ROTARY TYPE RESER SWITCH

11mm Size Metal Shaft Series 11 型金屬軸系列

MECHANICAL SPECIFICATION 機械性能

Operating Temperature 工作溫度	-20℃~+70℃
Shaft Rotation Force 操作力矩	20gf.cm~200gf.cm
Soldering Heat 焊接溫度	260℃, 3~5sec
Push-pull Strength 軸推拉強度	8.1Kgf.cm
Total Rotation Angle 全回轉角度	90°

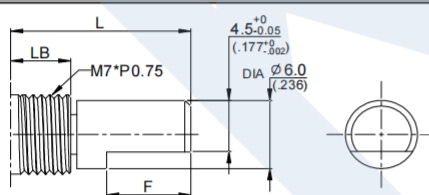
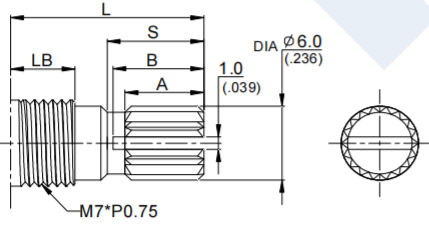
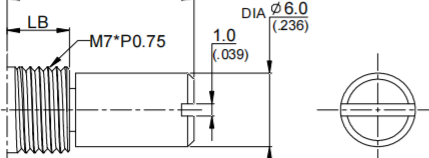
ELECTRICAL SPECIFICATION 電氣性能

Power Rating 額定功率	DC5V 0.5mA(1mA Min)
Insulation resistance 絕緣電阻	More than 100MΩ(AT 250V DC)
Contact resistance 接觸電阻	1Ω Max
Withstand Voltage 耐電壓	For 1 minute at 300V AC
Rotational life 回轉壽命	100,000 cycles

PUSH-ON SWITCH SPECIFICATION 推動開關

Switch Travel 開關工作行程	0.5±0.3mm Or 1.5±0.3mm
Switch Operating Force 開關作動力	610±306gf.cm
Switch Power Rating 開關額定功率	D.C.5V 10mA(1mA MIN.)
Switch Contact Resistance 開關接觸阻抗	300mΩ Max
Switch Life 開關壽命	20,000 Cycles

SHAFT TYPE AND SHAFT LENGTH 軸型及軸長 (RS11 Series)

F 軸		<table><tr><th>Length</th><th>F10</th><th>F11</th><th>F12</th><th>F13</th><th>F15</th><th>F17</th><th>F20</th><th>F25</th><th>F30</th></tr><tr><td>LB</td><td>5</td><td>5</td><td>5</td><td>5</td><td>5</td><td>7</td><td>7</td><td>7</td><td>7</td></tr><tr><td>L</td><td>10</td><td>11</td><td>12</td><td>13</td><td>15</td><td>17</td><td>20</td><td>25</td><td>30</td></tr><tr><td>F</td><td>4</td><td>5</td><td>5</td><td>5</td><td>7</td><td>7</td><td>10</td><td>12</td><td>12</td></tr></table>	Length	F10	F11	F12	F13	F15	F17	F20	F25	F30	LB	5	5	5	5	5	7	7	7	7	L	10	11	12	13	15	17	20	25	30	F	4	5	5	5	7	7	10	12	12																				
Length	F10	F11	F12	F13	F15	F17	F20	F25	F30																																																					
LB	5	5	5	5	5	7	7	7	7																																																					
L	10	11	12	13	15	17	20	25	30																																																					
F	4	5	5	5	7	7	10	12	12																																																					
Y 軸		<table><tr><th>Length</th><th>Y10</th><th>Y11</th><th>Y12</th><th>Y13</th><th>Y15</th><th>Y18</th><th>Y20</th><th>Y25</th><th>Y30</th></tr><tr><td>LB</td><td>5</td><td>5</td><td>5</td><td>5</td><td>5</td><td>7</td><td>7</td><td>7</td><td>7</td></tr><tr><td>L</td><td>10</td><td>11</td><td>12</td><td>13</td><td>15</td><td>18</td><td>20</td><td>25</td><td>30</td></tr><tr><td>A</td><td>4</td><td>5</td><td>5</td><td>5</td><td>6</td><td>7</td><td>10</td><td>10</td><td>12</td></tr><tr><td>B</td><td>4</td><td>5</td><td>5.5</td><td>5.5</td><td>6.5</td><td>8</td><td>10.5</td><td>11</td><td>13</td></tr><tr><td>S</td><td>4.4</td><td>5</td><td>5.5</td><td>6</td><td>7</td><td>9</td><td>11</td><td>12</td><td>14</td></tr></table>	Length	Y10	Y11	Y12	Y13	Y15	Y18	Y20	Y25	Y30	LB	5	5	5	5	5	7	7	7	7	L	10	11	12	13	15	18	20	25	30	A	4	5	5	5	6	7	10	10	12	B	4	5	5.5	5.5	6.5	8	10.5	11	13	S	4.4	5	5.5	6	7	9	11	12	14
Length	Y10	Y11	Y12	Y13	Y15	Y18	Y20	Y25	Y30																																																					
LB	5	5	5	5	5	7	7	7	7																																																					
L	10	11	12	13	15	18	20	25	30																																																					
A	4	5	5	5	6	7	10	10	12																																																					
B	4	5	5.5	5.5	6.5	8	10.5	11	13																																																					
S	4.4	5	5.5	6	7	9	11	12	14																																																					
R 軸		<table><tr><th>Length</th><th>R10</th><th>R11</th><th>R12</th><th>R13</th><th>R15</th><th>R17</th><th>R20</th><th>R25</th><th>R30</th></tr><tr><td>LB</td><td>5</td><td>5</td><td>5</td><td>5</td><td>5</td><td>7</td><td>7</td><td>7</td><td>7</td></tr><tr><td>L</td><td>10</td><td>11</td><td>12</td><td>13</td><td>15</td><td>17</td><td>20</td><td>25</td><td>30</td></tr></table>	Length	R10	R11	R12	R13	R15	R17	R20	R25	R30	LB	5	5	5	5	5	7	7	7	7	L	10	11	12	13	15	17	20	25	30																														
Length	R10	R11	R12	R13	R15	R17	R20	R25	R30																																																					
LB	5	5	5	5	5	7	7	7	7																																																					
L	10	11	12	13	15	17	20	25	30																																																					

ROTARY TYPE RESER SWITCH

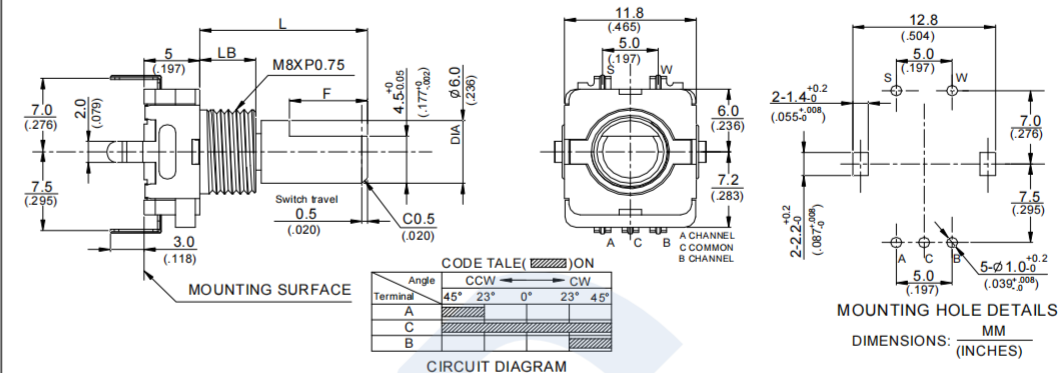
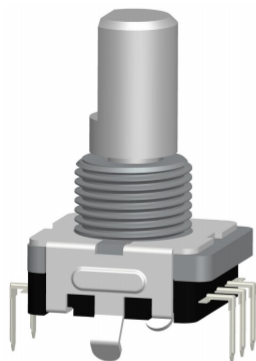
11mm Size Metal Shaft Series 11 型金屬軸系列

RS11 Series Dimensions

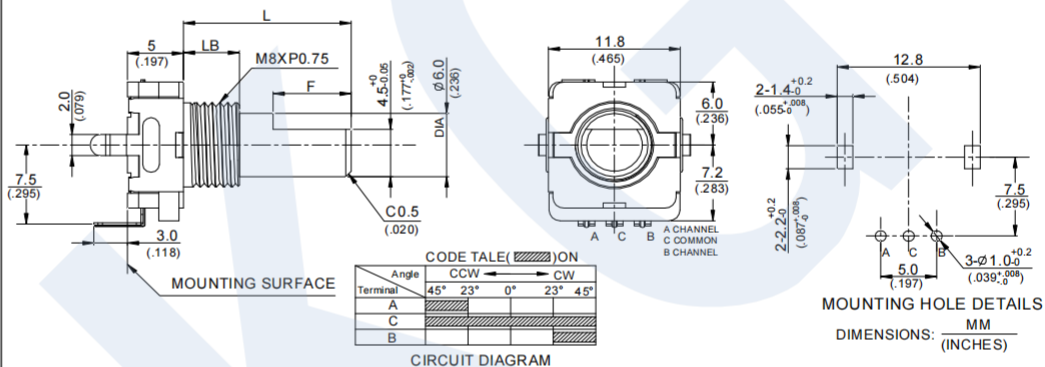
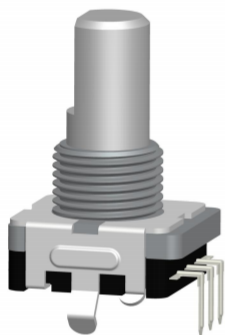
MODEL

DIMENSIONS

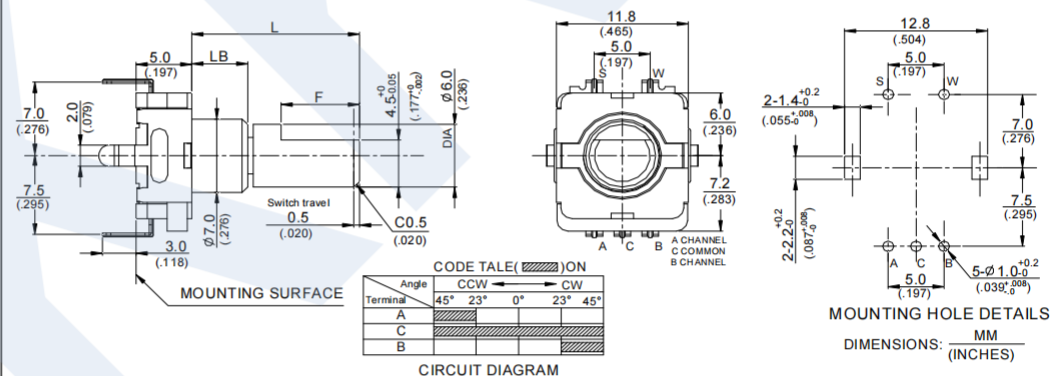
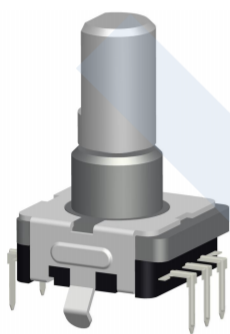
RS1112S-M8B5



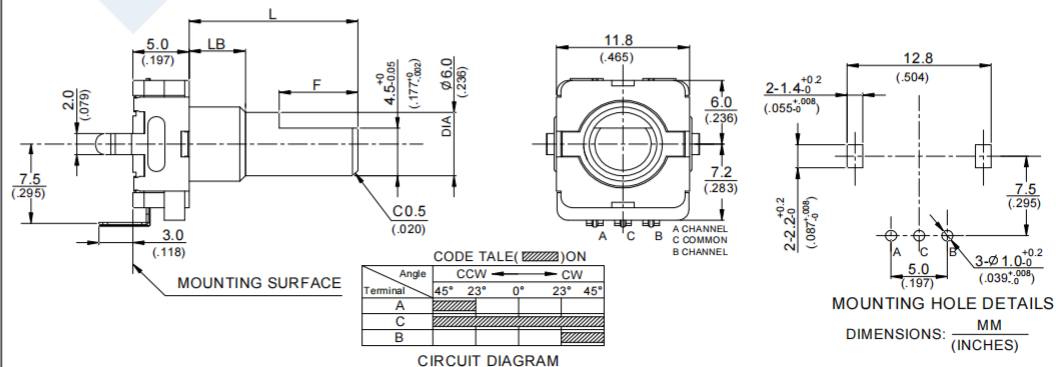
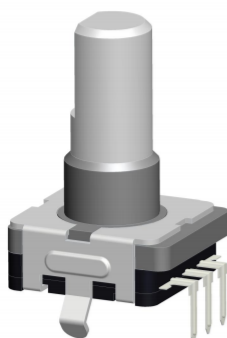
RS1112-M8B5



RS1112S-B5



RS1112-B5



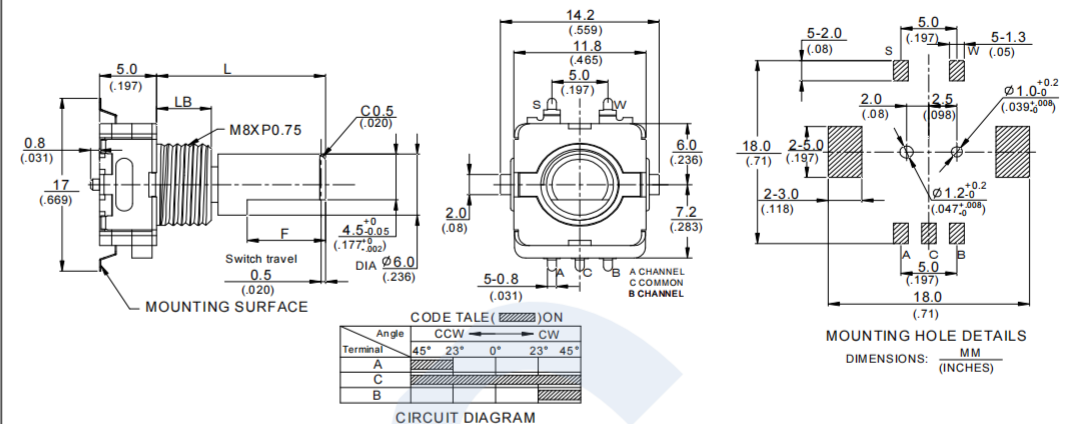
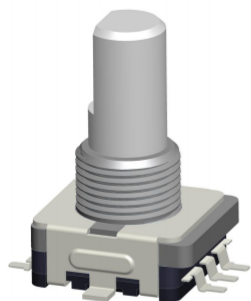
ROTARY TYPE RESER SWITCH

11mm Size Metal Shaft Series 11 型金屬軸系列

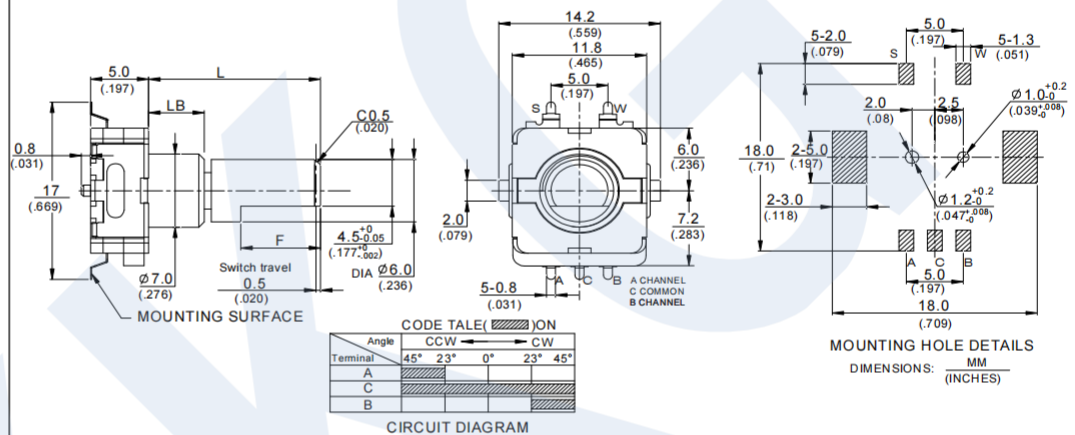
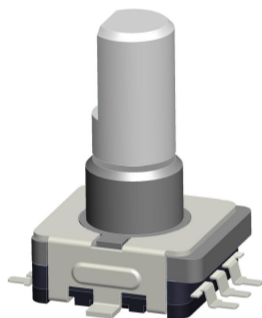
MODEL

DIMENSIONS

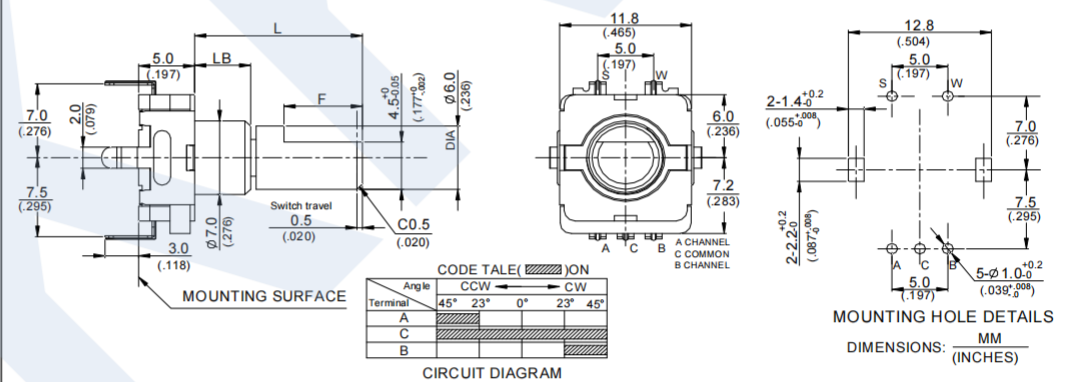
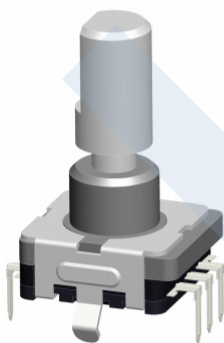
RS1132S-SMT-M8B5



RS1132S-SMT-B5



RS1112G-B5



RS1132G-SMT-B5

