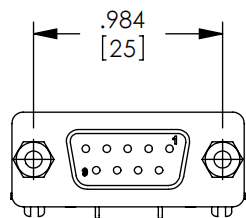
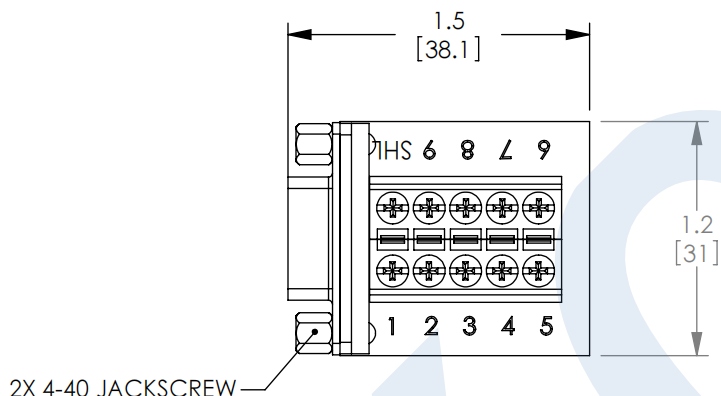


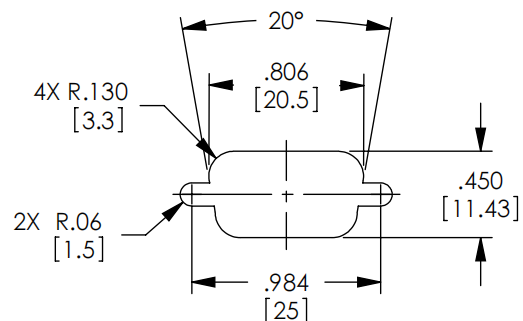
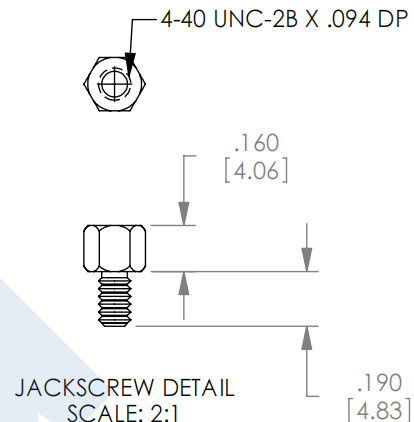
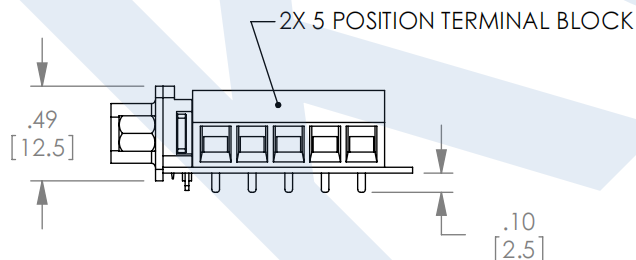
THE INFORMATION CONTAINED IN THIS DRAWING IS THE SOLE PROPERTY OF L-COM, INC. ANY REPRODUCTION IN PART OR WHOLE WITHOUT THE WRITTEN PERMISSION OF L-COM, INC. IS PROHIBITED.

# WIRING TABLE

DB9 PIN #	TERMINAL BLOCK #
1	1
2	2
3	3
4	4
5	5
6	6
7	7
8	8
9	9
SHELL	SHL



FEMALE, 9 CONTACT  
D-SUB CONNECTOR



RECOMMENDED PANEL OPENING  
(MAX PANEL THICKNESS: 0.06")

RoHS Compliant ✓

## NOTES:

VOLTAGE RATING: 1000V AC & 500V DC.  
CURRENT RATING: 3 AMPS

COMPONENT ASSEMBLY SHALL BE INDIVIDUALLY IN  
ACCORDANCE WITH L-COM SPECIFICATION PS-0031.

UNLESS OTHERWISE SPECIFIED, DIMENSIONS ARE IN INCHES [mm] OVERALL CABLE LENGTH TOLERANCE: <12 [305] = +1 [25] / -0 >12 [305] <60 [1524] = +2 [51] / -0 >60 [1524] <120 [3048] = +4 [102] / -0 >120 [3048] <300 [7620] = +6 [152] / -0 >300 [7620] = +3% / -0% ALL OTHER DIMENSIONAL TOLERANCES: .X = ±.2 .XX = ±.02 .XXX = ±.005	APPROVALS	DATE		
	DRAWN BY D. PARHAM	4/28/2004		
	CHECKED BY T. CLARK	4/29/2004	CATEGORY	
	APPROVED BY C. McCORMICK	5/7/2004	PRODUCT DESCRIPTION	
PROJECTION 	CONFIGURATION DETAILS OF UNDIMENSIONED FEATURES MAY VARY		FIELD INSTALLABLE DB9	
	COLOR VARIATIONS MAY OCCUR		SIZE <b>A</b>	FSCM NO. <b>43321</b>
		SCALE: NONE	CAD FILE: DGB9FT.SLDDRW	REV. <b>C</b>
		DWG. NO. <b>D-SUB-9PE</b>		SHEET 1 OF 1