

应用于:微波炉、洗衣机等其它白色家用电器上

Applied to: microwave oven, washing machine and other white household appliances,

主要功能:功能切换、速度调节、温度调节

Main functions: function switching, speed adjustment, temperature adjustment

Ordering Information 訂貨說明		Code 代碼	Specification 規格參數																		
1	Model Series 產品系列	RS181	See RS181 Series Dimensions 見 RS181 系列產品圖																		
2	Design Code 設計代號	12																			
4	Output Signal 輸出信號	41	41 輸出 信號 圖	CCW ⇄ CW 1=ON 0=OFF																	
				Output pin	1	2	3	4	5	6	7	8	9	10	11	12	13	14	15	16	
				0°	22.5°	45°	67.5°	90°	112.5°	135°	157.5°	180°	202.5°	225°	247.5°	270°	292.5°	315°	337.5°		
				1	0	0	0	0	0	0	0	1	1	1	1	1	1	1	1	1	
				2	0	0	0	0	1	1	1	1	1	1	1	1	0	0	0	0	
				3	0	0	1	1	1	1	0	0	0	0	1	1	1	1	0	0	
		4	0	1	1	0	0	1	1	0	0	1	1	0	0	1	1	0			
		COM	1	1	1	1	1	1	1	1	1	1	1	1	1	1	1	1			
		43	43 輸出 信號 圖	CCW ⇄ CW 1=ON 0=OFF																	
				Output pin	1	2	3	4	5	6	7	8	9	10	11	12	13	14	15	16	
				0°	22.5°	45°	67.5°	90°	112.5°	135°	157.5°	180°	202.5°	225°	247.5°	270°	292.5°	315°	337.5°		
				1	0	1	1	0	0	1	1	0	0	1	1	0	0	1	1	0	
2	0			0	1	1	1	1	0	0	0	0	1	1	1	1	0	0			
3	0			0	0	0	1	1	1	1	1	1	1	1	0	0	0	0			
4	0	0	0	0	0	0	0	0	1	1	1	1	1	1	1	1					
COM	1	1	1	1	1	1	1	1	1	1	1	1	1	1	1	1					
45	45 輸出 信號 圖	CCW ⇄ CW 1=ON 0=OFF																			
		Output pin	1	2	3	4	5	6	7	8	9	10	11	12	13	14	15	16			
		0°	22.5°	45°	67.5°	90°	112.5°	135°	157.5°	180°	202.5°	225°	247.5°	270°	292.5°	315°	337.5°				
		1	0	1	0	1	0	1	0	1	0	1	0	1	0	1	0	1			
		2	0	0	1	1	0	0	1	1	0	0	1	1	0	0	1	1			
		3	0	0	0	0	1	1	1	1	0	0	0	0	1	1	1	1			
4	0	0	0	0	0	0	0	0	1	1	1	1	1	1	1	1					
COM	1	1	1	1	1	1	1	1	1	1	1	1	1	1	1	1					
5	Detent and Torque 定位數及扭矩	16	16 Detent 16 定位				torque 扭矩		HC		100±20gf.cm										
								HHC		150±30gf.cm											
6	Bushing Type 軸套類型	B6.3	Φ 10 Bushing, Length 6.3 Φ 10 軸套，長度可選 6.3																		
7	Shaft Type and Shaft Length 軸型及軸長	FD25A12	See RS181 axis dimension table 見 RS181 軸型尺寸表																		

MECHANICAL SPECIFICATION 機械性能

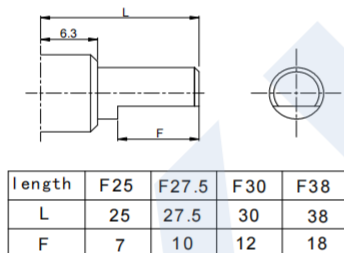
Operating Temperature 工作溫度	-20℃~+70℃
Shaft Rotation Force 操作力矩	20gf.cm~200gf.cm
Soldering Heat 焊接溫度	260℃, 3~5sec
Push-pull Strength 軸推拉強度	5.1Kgf.cm
Total Rotation Angle 全回轉角度	360°

ELECTRICAL SPECIFICATION 電氣性能

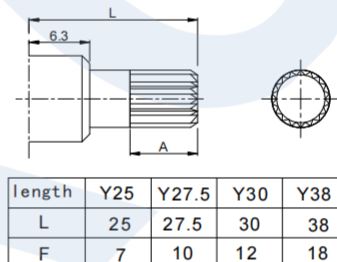
Power Rating 額定功率	DC10V 1mA
Insulation resistance 絕緣電阻	More than 100MΩ(AT 50V DC)
Contact resistance 接觸電阻	3Ω Max
Withstand Voltage 耐電壓	For 1 minute at 50V AC
Rotational life 回轉壽命	30,000 cycles

SHAFT TYPE AND SHAFT LENGTH 軸型及軸長 (RS181 Series)

FD 軸



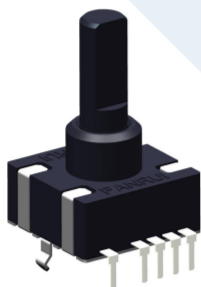
YD 軸



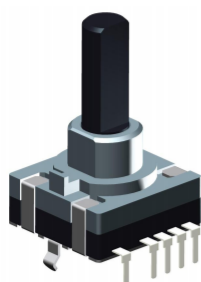
RS181 Series Dimensions

MODEL

RS18112



RS18113



DIMENSIONS

