

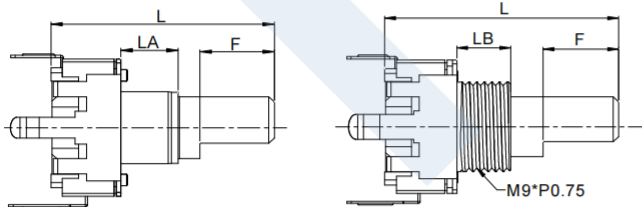
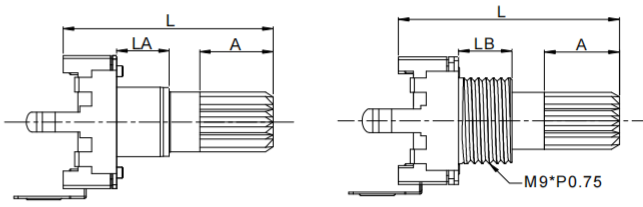
EC12 12 S - 24P - 24LC - A2 - F20A7

1	Model Series 產品系列	3	With Switch 帶開關	5	Detent and Torque 定位數及扭矩	7	Shaft Type and Shaft Length 軸型及軸長
2	Design Code 設計代號	4	Output Signal 輸出信號	6	Bushing Type 軸套類型		

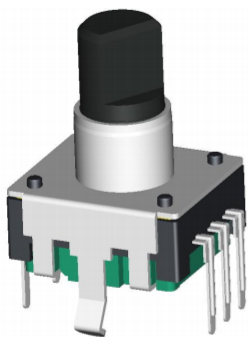
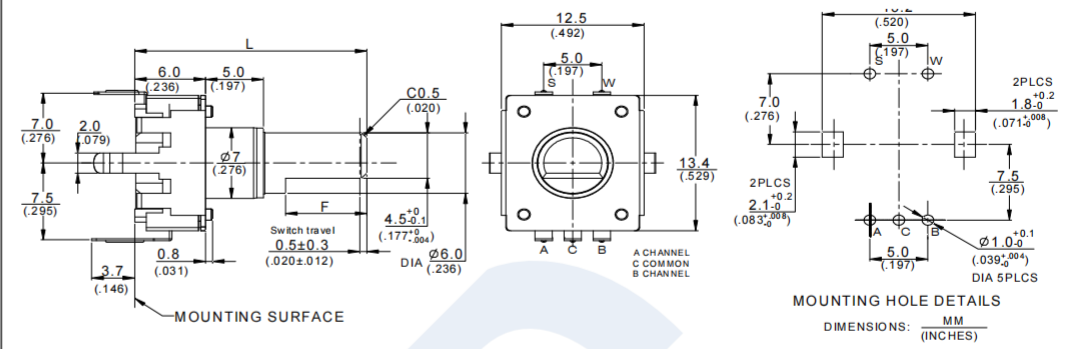
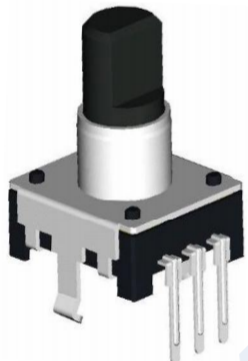
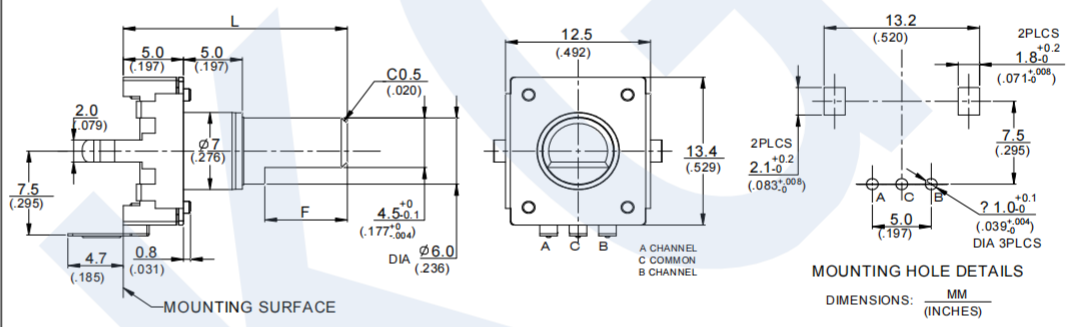
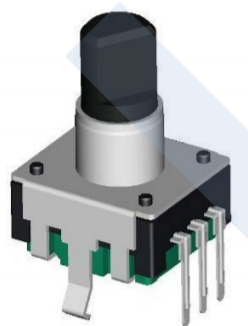
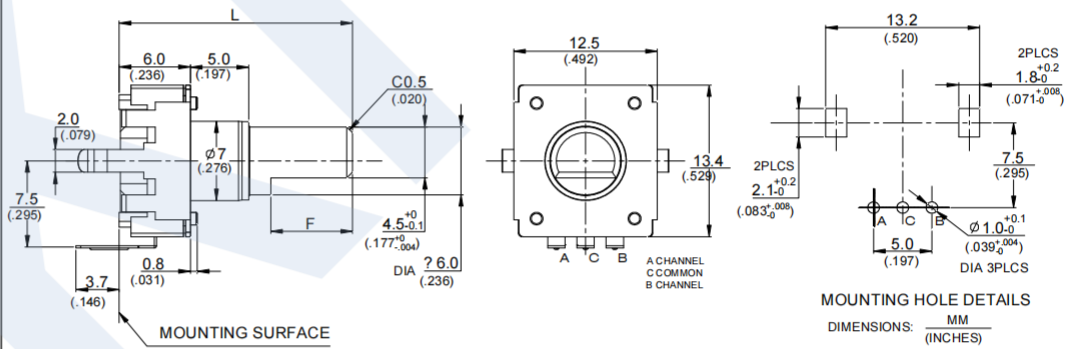
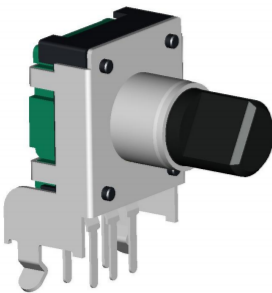
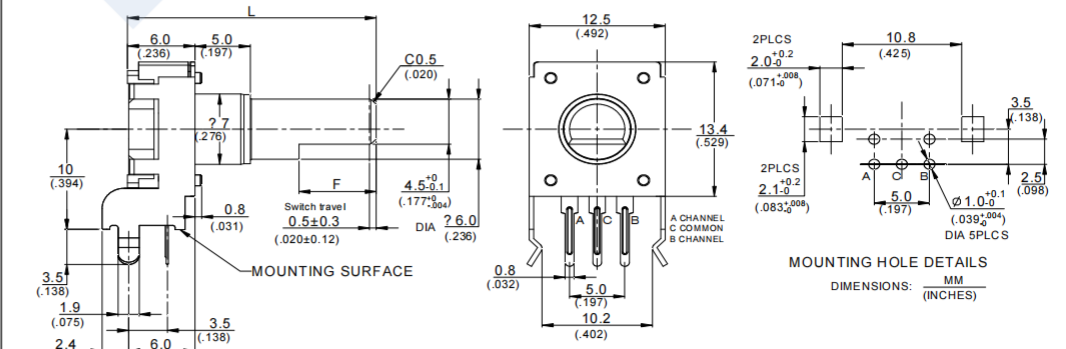
应用于：汽车音响、汽车空调、汽车导航、调音台、多媒体音响及功放、家用电器  
Application: car audio, car air conditioning, carnavigation, mixing station, multimedia audio and power amplifier, household appliances

主要功能：调频、调节音量、调节温度、功能切换等。  
Main functions: frequency modulation, volume adjustment, temperature adjustment, function switching, etc.

Ordering Information 訂貨說明		Code 代碼	Specification 規格參數			
1	Model Series 產品系列	EC12	See EC12 Insulated Shaft Series Dimensions 見 EC12 絕緣軸系列產品圖			
2	Design Code 設計代號	12				
3	With Switch 帶開關	S	With Momentary Switch 帶瞬時接觸開關			
			No Switch 無開關			
4	Pulse 脈衝數	12P	12 Pulse 12 脈衝			
		18P	18 Pulse 18 脈衝			
		24P	24 Pulse 24 脈衝			
5	Detent and Torque 定位數及扭矩	0	No Detent 無定位	torque 扭矩	LLC	40±20gf.cm
		12	12 Detent 12 定位		LC	60±20gf.cm
		18	18 Detent 18 定位		HC	100±20gf.cm
		24	24 Detent 24 定位		HHC	150±30gf.cm
6	Bushing Type 軸套類型	M9B5	M9 Threaded Bushing, Bushing Length/5mm /7mm M9 螺紋，軸套長度可選 5mm /7mm			
		M9B7				
		A2	Φ6.8 Smoke tube, Length 2mm /5mm Φ6.8 抽管，長度可選 2mm /5mm			
		A5				
7	Shaft Type and Shaft Length 軸型及軸長	F20A7	See EC12 axis dimension table 見 EC12 軸型尺寸表			

MECHANICAL SPECIFICATION 機械性能									
Operating Temperature 工作溫度	-20℃~+70℃								
Shaft Rotation Force 操作力矩	20gf.cm~200gf.cm								
Soldering Heat 焊接溫度	260℃, 3~5sec								
Push-pull Strength 軸推拉強度	5.1Kgf.cm								
Total Rotation Angle 全回轉角度	360°								
ELECTRICAL SPECIFICATION 電氣性能									
Power Rating 額定功率	DC5V Each lead: 0.5mA(Max 5mA;Min 0.5mA) Common lead:1mA(Max 10mA;Min 0.5mA)								
Insulation resistance 絕緣電阻	More than 100MΩ(AT 50V DC)								
Contact resistance 接觸電阻	1Ω Max								
Withstand Voltage 耐電壓	For 1 minute at 50V AC								
Rotational life 回轉壽命	30,000 cycles								
PUSH-ON SWITCH SPECIFICATION 推動開關									
Switch Travel 開關工作行程	0.5±0.2mm								
Switch Operating Force 開關作動力	610±306gf.cm								
Switch Power Rating 開關額定功率	D.C.5V 10mA(1mA MIN.)								
Switch Contact Resistance 開關接觸阻抗	300mΩ Max								
Switch Life 開關壽命	30,000 Cycles								
SHAFT TYPE AND SHAFT LENGTH 軸型及軸長 (EC12 Insulated Shaft Series)									
F 軸									
									
Length	F12.5	F15	F15	F16	F17.5	F20	F22.5	F25	F30
L	12.5	15	15	16	17.5	20	22.5	25	30
LA	2	2	5	5	5	5	5	5	5
LB					5	5	7	7	7
F	3.5	7	5	4.5	5	7	7	12	12
Y 軸									
									
Length	Y15	Y17.5	Y20	Y22.5	Y25	Y30			
L	15	17.5	20	22.5	25	30			
LA	2	5	5	5	5	5			
LB		5	5	7	7	7			
F	7	5	7	7	12	12			

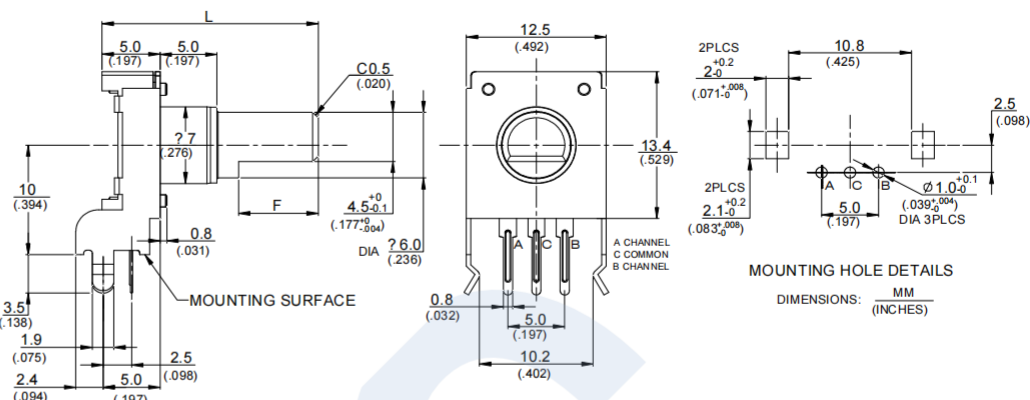
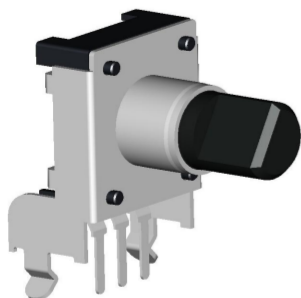
### EC12 Insulated Shaft Series Dimensions

MODEL	DIMENNSIONS
<b>EC1212S</b> 	 <p>MOUNTING HOLE DETAILS DIMENSIONS: MM (INCHES)</p>
<b>EC1212</b> 	 <p>MOUNTING HOLE DETAILS DIMENSIONS: MM (INCHES)</p>
<b>EC1223</b> 	 <p>MOUNTING HOLE DETAILS DIMENSIONS: MM (INCHES)</p>
<b>EC1215S</b> 	 <p>MOUNTING HOLE DETAILS DIMENSIONS: MM (INCHES)</p>

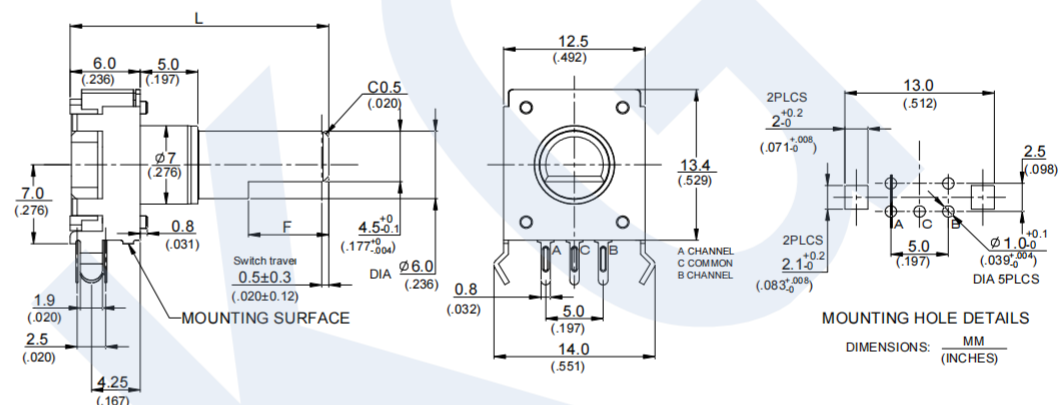
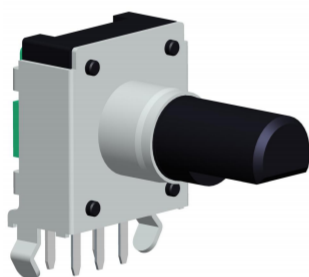
### MODEL

### DIMENNSIONS

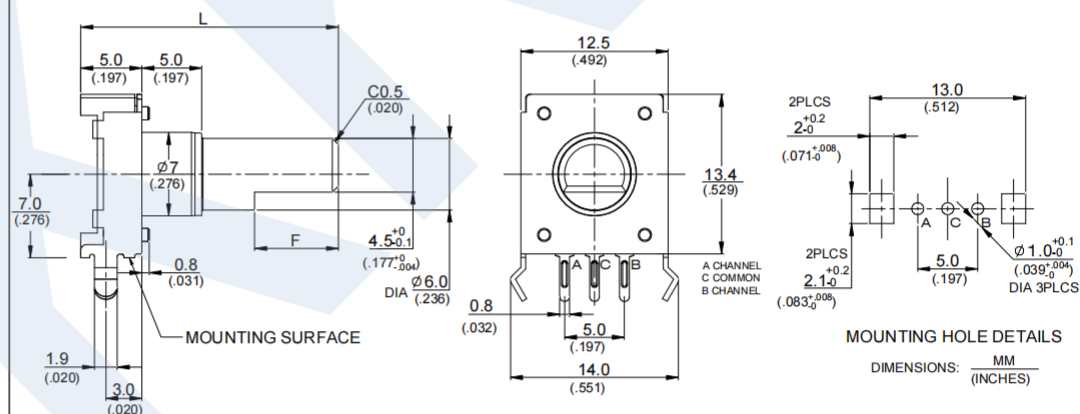
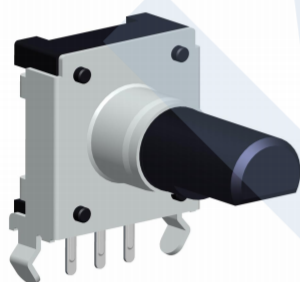
#### EC1215



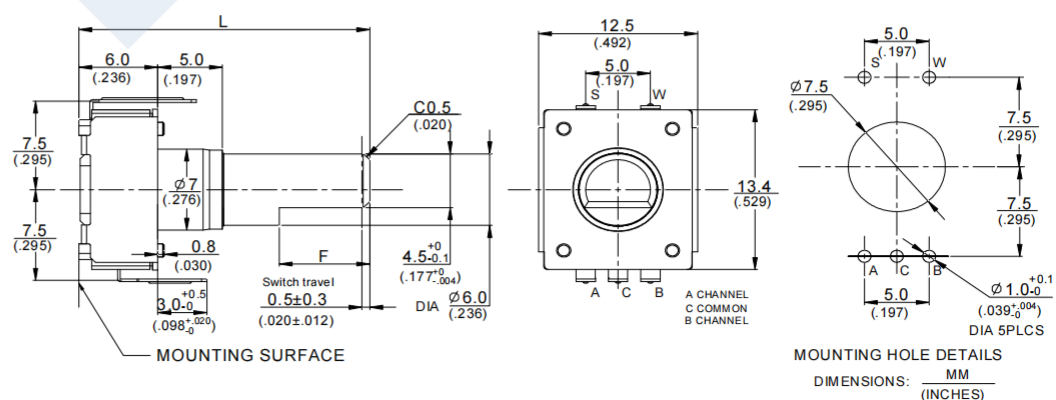
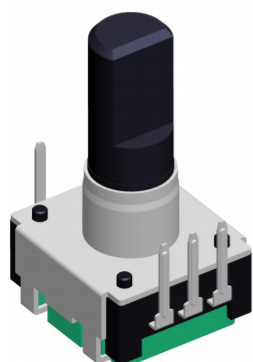
#### EC1217S



#### EC1217



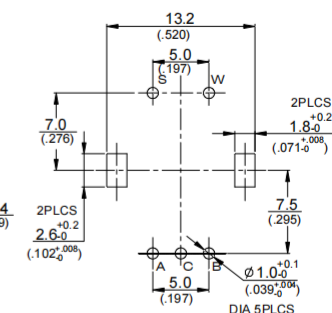
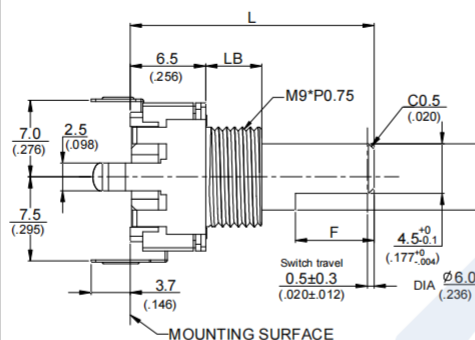
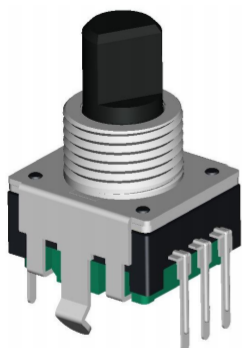
#### EC1252S



### MODEL

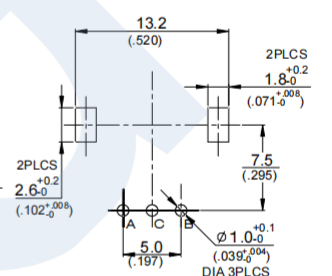
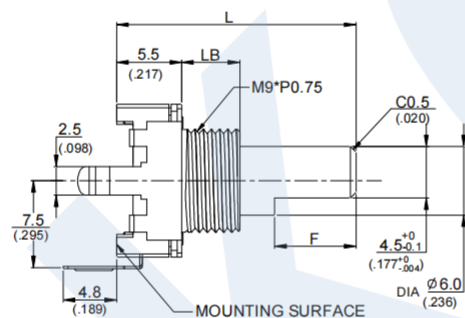
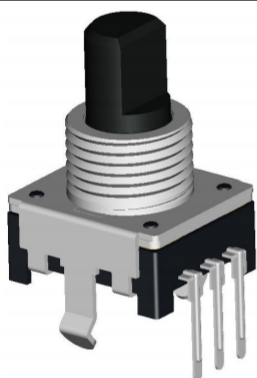
### DIMENNSIONS

#### EC122S



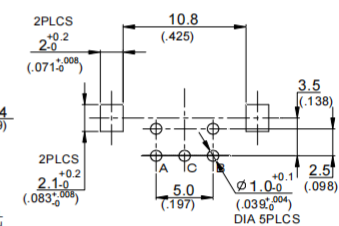
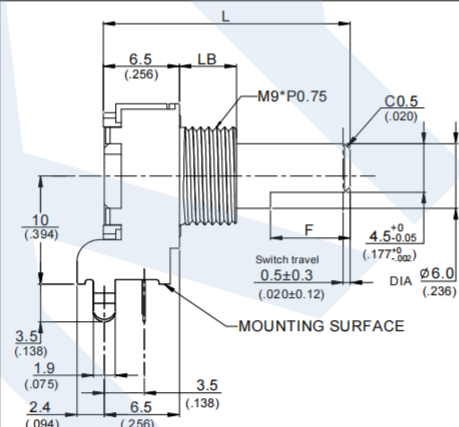
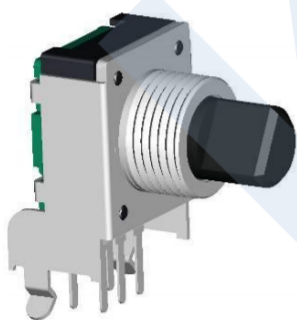
MOUNTING HOLE DETAILS  
DIMENSIONS: MM (INCHES)

#### EC1222



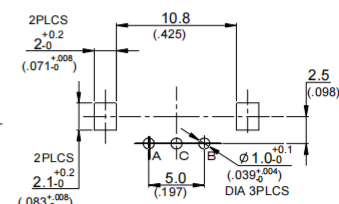
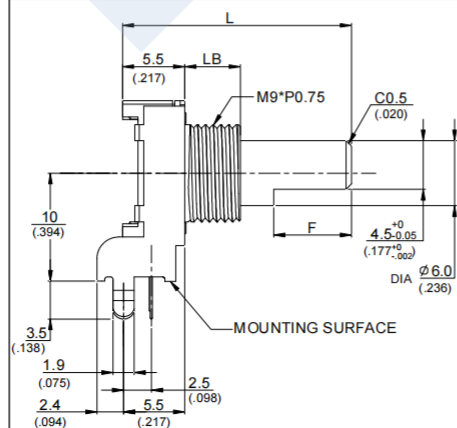
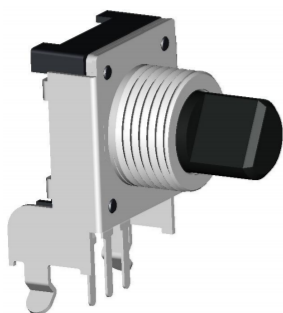
MOUNTING HOLE DETAILS  
DIMENSIONS: MM (INCHES)

#### EC1225S



MOUNTING HOLE DETAILS  
DIMENSIONS: MM (INCHES)

#### EC1225



MOUNTING HOLE DETAILS  
DIMENSIONS: MM (INCHES)